



Gwinnett County Public Schools

Office of Health & Social Services

Community Resource Catalog



“Envisioning a system of world-class schools”

Updated May 2023

Table of Contents

Behavioral Health	3
Crisis Response.....	3
Acute Inpatient Hospitals	3
Residential Treatment Facilities.....	4
Counseling Resources.....	5
Psychiatric Providers.....	12
Spanish Speaking Providers.....	14
Grief Resources.....	16
Eating Disorder Treatment	17
Substance Abuse Treatment.....	19
Medical	20
Medical Resources.....	20
Prescription Assistance	25
Vision	26
Dental	27
Pregnancy and Teen Parenting	28
Students with Disabilities	30
Psychotherapy, Speech, Occupational, Physical Therapy.....	30
Medical/Financial Support for Youth with Disabilities	32
Support Services for Youth with Disabilities	34
Support Services for Adults with Disabilities	37
Housing	39
Rent/Utility Assistance.....	39
General Housing Supports.....	41
Homeless Shelters & Supports	42
Domestic Violence Shelters & Supports	45
Clothing Resources	47
Food	48
Childcare/Afterschool Resources	53
Employment	55
Legal	56
Immigration Legal Services	57
Multi-cultural Resources	58
Resources for Asian Families	58
Resources for Latino Families.....	59
Resources for Immigrants & Refugees	60
Resources for LGBTQ Students.....	61
Multi-resource Agencies	62
Hotlines	63



BEHAVIORAL HEALTH

If your student has insurance coverage, please contact your insurance provider FIRST to determine where they have authorized access for mental/behavioral health services. Please confirm, either while making an appointment or prior to going to an appointment, if your insurance provider is accepted. Also, your insurance provider may have referrals to specific therapists who specialize in children and adolescent issues. Note that Medicaid CMOs include Amerigroup, CareSource, and Peach State.

Crisis Response

Georgia Crisis & Access Line (GCAL)

1-800-715-4225 OR Call 988

www.mygcal.com

Help is available 24/7 for Georgians experiencing challenges with mental health, drugs, alcohol, or developmental disabilities. GCAL can also be accessed by dialing 988.

Crisis Text Line

Text "home" to 741741

<https://www.crisistextline.org/>

Connect with a volunteer crisis counselor via text message, web browser, or What's App. Connection with a counselor usually takes less than 5 minutes but can take longer during high-traffic times.



Acute Inpatient Hospitals

SummitRidge Hospital

678-442-5800

250 Scenic Highway Lawrenceville, GA 30045

www.summitridgehospital.net

Age Range: 11-17

Payment: free assessments 24/7, accepts most insurances and Medicaid CMOs (except Ambetter)

Services: Acute inpatient, partial hospitalization, intensive outpatient

View Point Health Crisis Stabilization Unit

678-209-2710

2591 Candler Road Decatur, GA 30032

www.myviewpointhealth.org

Age Range: 14-17

Payment: free assessments 24/7, accepts most insurances and Medicaid CMOs, free if uninsured

Services: Acute inpatient. Have Spanish speaking staff.

Riverwoods Behavioral Health

877-516-8157

223 Medical Center Drive Riverdale, GA 30274

www.riverwoodsbehavioral.com

Age Range: 10-17

Payment: free assessments 24/7, accepts most insurances and Medicaid CMOs, payment plans available.

Services: Acute inpatient

VPH Autism Crisis Unit

678-209-2560

3350 Ebenezer Road Conyers, GA 30094

www.myviewpointhealth.org

Age Range: 10-14

Payment: accepts most insurances and Medicaid CMOs, insurance required for treatment

Services: Acute inpatient for youth with ASD

Peachford Hospital

770-455-3200

2151 Peachford Road Dunwoody, GA 30339

www.peachford.com

Age Range: 4-18

Payment: free assessments 24/7, accepts most major insurances and Medicaid CMOs (except Ambetter)

Services: Acute inpatient, intensive outpatient, partial hospitalization, substance abuse treatment, parenting classes, pharmacy

Ridgeview Institute

844-350-8800

709 Breedlove Drive Monroe, GA 30655

3995 South Cobb Drive Smyrna, GA 30080

www.ridgeviewinstitute.com

Age Range: 13-17

Payment: free assessments 24/7, accepts most major insurances and Medicaid CMOs

Services: Acute inpatient, partial hospitalization, intensive outpatient, substance abuse treatment (SA treatment in Smyrna only)

Laurelwood Hospital

770-219-3800

200 Wisteria Drive Gainesville, GA 30501

www.nghs.com/behavioral-health/laurelwood

Age Range: 12-17

Payment: free assessments M-F 8-5, accepts most insurances and Medicaid CMOs

Services: Acute inpatient, substance abuse treatment

Anchor Hospital

678-251-3200

5454 Yorktowne Drive Atlanta, GA 30349

<https://anchorhospital.com/>

Age Range: 12-17

Payment: free assessments 24/7, accepts most insurances and Medicaid CMOs

Services: Acute inpatient, substance abuse treatment

Residential Treatment Facilities

Psychiatric residential treatment facilities (PRTFs) are long-term hospitals that are only utilized in extreme situations in which young people are not safe and cannot be effectively treated in the community due to their mental health needs. Referrals for PRTFs must come from a mental health professional.

Hillside

404-875-4551

690 Courtenay Dr NE Atlanta, GA 30306

<https://hside.org>

Age range: 11-17

Payment: accepts most insurances and Medicaid CMOs

Services: Residential, Virtual Intensive Outpatient Program (minimum of six weeks, for youth 13-17)

Youth Villages Inner Harbour

770-852-6300

4685 Dorsett Shoals Rd Douglasville, GA 30135

<https://youthvillages.org/>

Age range: 6-17

Payment: accepts most insurances and Medicaid CMOs

Services: Residential

Devereux

770-427-0147

1291 Stanley Road Kennesaw GA 30152

<https://devereux.org>

Age range: 10-21

Payment: accepts most major insurances and Medicaid CMOs

Services: Residential, CSEC residential program (for commercially sexually exploited girls age 10-21)

Laurel Heights

404-888-5475

934 Briarcliff Road NE Atlanta, GA 30306

<https://laurelheightshospital.com>

Age range: 6-17

Payment: accepts most major insurances and Medicaid CMOs

Services: Acute Inpatient, Residential, Discovery Program (residential treatment for those diagnosed with Autism Spectrum Disorder)

Counseling

The following resources have been categorized based on geographic region for your convenience. School personnel and/or parents are welcome to choose a resource from various geographic regions. Some providers offer virtual sessions, and some providers offer in-home services.

North Gwinnett Counseling Resources (Auburn, Braselton, Buford, Hoschton, Sugar Hill, Suwanee)

Thrive Counseling Services: L. Kay Stanley
678-227-2991

3455 D Lawrenceville Suwanee Rd, Suwanee
<http://www.lkaystanleyipc.com/>

Payment: accepts Aetna, Anthem BCBS, Cigna.
Telehealth & office sessions available.

Solutions of Life, LLC
770-638-7145

1400 Buford Hwy, Suite C1, Sugar Hill
www.solutionsoflife.com

Payment: accepts BCBS, United Healthcare, Cigna,
Aetna, Magellan, Amerigroup, Medicare, Value
Options, Tricare.
Offering telehealth sessions.

Bold Crossings Counseling

Brianna Owen, LPC, CPCS
470-310-1777

2070 Buford Hwy, Suite 1B, Buford
<http://boldcrossingscounselingandconsulting.com>

Payment: accepts BCBS insurance.
Christian Counseling.

Northeast Georgia Psychological Services

770-882-5884
4073 Hwy 53, Hoschton
<http://ngpsych.com/>

Payment: accepts Medicaid, CareSource, Peach
State, Amerigroup, Medicare, BCBS, United
Healthcare, Tricare, Aetna.
Offers psychological evaluations.

Ser Familia

678-363-3079

5000 Peachtree Industrial Blvd Ste 160, Norcross
3594 Baxley Point Drive, Suwanee
<https://serfamilia.org/>

Payment: no fee is charged.
Spanish-speaking provider that works with the
family as a whole.

Northeast GA Counseling

770-271-5040

359 Peevy Street, Buford
www.northeastgacounseling.com

Payment: insurances accepted vary by clinician;
those accepted for adults: Aetna, BCBS, United
Healthcare, Cigna, Humana. Therapists working
with adolescents do not accept insurance.
Telehealth and office sessions available.

Buford Psychology: Dr. Erica Kasler

678-825-5660

2070 Buford Hwy Ste 1A, Buford
<http://www.bufordpsychology.com/>

Payment: insurances accepted include Medicaid
(under 21), Peach State, Anthem BCBS, Kaiser,
Cigna.

Specializes in treating Autism Spectrum Disorder.

3B Counseling: Dr. Susan Baumann

770-778-0193

1400 Buford Hwy Suite R1, Sugar Hill
<https://www.3bcounseling.net/>

Payment: accepts Anthem BCBS.
*Play therapist.

Lawrenceville Counseling Resources (Dacula, Lawrenceville)

CHRIS Counseling Center: Gwinnett

678-376-3800

760 Longleaf Blvd, Suite A, Lawrenceville

<https://chris180.org/counselingcenters/>

Payment: accepts most major insurances and Medicaid CMOs, has a grant for families who are uninsured.

Offers individual therapy and wraparound programs for youth with significant emotional/behavioral needs.

LifeStance Health (formerly Ray of Hope)

678-213-2194

1838 Old Norcross Rd, Suite 400, Lawrenceville

www.Rhcounselingservices.com

Payment: accepts most major insurances and Medicaid CMOs.

Telehealth and office sessions available.

Responsible Child LLC: Dr. Chen Foley

678-924-3201

2775 Cruse Road, Suite 1601, Lawrenceville

www.responsiblechild.com

Payment: accepts most major insurances and Medicaid CMOs.

Fluent in English, Mandarin, and Cantonese; offers play therapy and parent-child support.

Cognitive Behavioral Health

770-783-8927

3617 Braselton Hwy., Suite 104, Dacula

www.cbhealth.net

Payment: insurances accepted vary by clinician; those accepted: AETNA, BCBS, Cigna, Medicare, Humana, Amerigroup, Cenpatico, Tricare, United Healthcare, Value Options, Ambetter.

InPowerment Inc.

770-771-8208

1840 Old Norcross Rd, Suite 300, Lawrenceville

www.inpower1.com

Payment: accepts Aetna, Amerigroup, Ambetter, Peach State, CareSource; sliding scale. Offering telehealth.

Atlanta Family Counseling Center

770-513-8988

190 Camden Hill Road, Suite A, Lawrenceville

<https://afcounseling.com>

Payment: accepts BCBS, Aetna, Humana, Cigna, Tricare, some EAPs

Services for mental health and substance abuse, telehealth available.

Mindful Works Counseling, LLC: La'mar Walker

678-960-8379

195 W. Pike St, Suite 209, Lawrenceville

www.mindfulworkscounseling.org

Payment: Aetna, Cigna, BCBS, Amerigroup, Humana, Tricare.

Works with clients 12 and older, all appointments are virtual as of 12/2022.

Social Empowerment Center

770-925-2095

2775 Cruse Rd, Suite 2601, Lawrenceville

www.socialempowermentcenter.com

Payment: accepts most insurances and Medicaid CMOs; if client has never had Medicaid and is uninsured, no charge for services.

Offers therapy in home and office, community support, & medication management.

Counseling & Assessment Specialists: Lisa Hunter

770-324-4420

271B Culver Street, Suites C & D, Lawrenceville

www.lisahuntercounseling.net

Payment: accepts most major insurances and Medicaid CMOs.

Specializes in adolescent therapy; LGBTQ affirming; offering telehealth.

Duluth Counseling Resources (Berkeley Lake, Duluth)

Angel Lopez Clinic 770-232-0555

2250 Satellite Blvd, Suite 175, Duluth
<https://www.angellopezclinic.com/>

Payment: accepts most major insurances and Medicaid CMOs.

Support available in English, Spanish, and Sign Language. In person and virtual therapy.

Living Balance Psychotherapy 404-919-8496

2810 D Peachtree Industrial Blvd, Duluth
<https://www.livingbalancepsych.com/>

Payment: accepts Aetna, Ambetter, Anthem, BCBS, Cigna, Humana.

Affinity Counseling Center 678-392-1302

3883 Rogers Bridge Rd NW, Suite 203A, Duluth
<http://www.valuelives.com/>

Payment: accepts Allwell, Ambetter, Anthem, BCBS, Bright Healthcare, CareSource, Humana, Peach State, Tricare.

Offers play therapy, Russian & Ukrainian speaking therapist, counseling for those with Autism.

A Better Day Counseling 678-701-8477

3065 Peachtree Industrial Blvd, Suite 110, Duluth
<https://mybehaviormatters.com/>

Payment: accepts Aetna, BCBS, CareSource, Cigna, Humana.

All appointments are virtual; offers adolescent DBT group for 13–17-year-old teens (\$60 per session).

Jill Wilson, LPC 770-418-1078

3500 Duluth Park Ln Ste 410, Duluth
<https://www.jillwilson.net/>

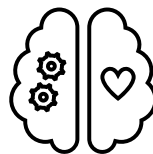
Payment: accepts most major insurances; offers sliding scale

Works with adults for individual and couples counseling.

Metro Behavioral Care

770-622-2259: Duluth location
1810 Peachtree Industrial Blvd Ste 204, Duluth
770-513-7666: Lawrenceville location
227 Scenic Hwy Ste A, Lawrenceville
<https://www.mbcpsych.com/>

Payment: accepts Aetna, Anthem BCBS, Ambetter, Amerigroup, Beacon Health, Cigna, Humana, Medicare, Meritain, Optum, United Behavioral Health, United Healthcare.
Offers virtual appointments.



Lilburn Counseling Resources (Lilburn, Stone Mountain, Tucker)

Rock Bridge Psychological Associates

770-925-7898

5440 Lawrenceville Hwy, Lilburn, GA 30047

<https://rockbridgepsych.com/>

Payment: accepts some insurances.
Spanish and English-speaking therapists; LGBTQ+ affirming; Virtual appointments only.

Renewed Journey Counseling Services

404-625-5427

1479 Brockett Rd Suite 101, Tucker

<https://www.renewedjourney.org/>

Payment: accepts Aetna, Cigna, BCBS.
Offers psychiatry, individual therapy, play therapy, family therapy. Offers virtual and in-person sessions.

Ausborn Behavioral Care

770-938-4616

1841 Montreal Rd Suite 104, Tucker

<https://www.ausbornpsychdoc.com/>

Payment: accepts most insurances and Medicaid CMOs.
Offers virtual appointments.

The Latoria Group

404-491-8361

4333 Lynburn Drive, Tucker

<https://latoria.com/>

Payment: accepts Aetna, Anthem BCBS, Cigna, Humana, United Healthcare.
Offers EMDR for trauma, treats addiction and eating disorders, offers virtual skill building summer camp with financial assistance.

Southeast Gwinnett Counseling Resources (Grayson, Loganville, Snellville)

Bright Path Counseling

770-676-0737

3925 Harrison Rd, Suite 100, Loganville

<https://brightpathcc.com>

Payment: insurances accepted vary by clinician; those accepted: Cigna, United Healthcare, CareSource.

Offers play therapy, EMDR for trauma, Spanish speaking therapist, therapist specializing in Autism.

SOS Counseling & Consultation Group

770-733-1469

2336 Wisteria Dr, Suite 440, Snellville

<https://www.sosccg.com/>

Payment: insurances accepted vary by clinician; those accepted: CareSource, United Healthcare, Aetna, Peach State, Amerigroup, Ambetter, BCBS, Cigna, Tricare.
Offers virtual appointments, EMDR for trauma, play therapy, therapist specializing in the Black Psychological Experience, Christian counselors.

Mosaic Counseling

470-292-7485

299 Cooper Road, Suite A, Loganville

Payment: accepts most major insurances and Medicaid CMOs.

Offers EMDR for trauma.

Tangrill Varner

404-549-6265

2330 Scenic Hwy, Suite 107, Snellville

Payment: accepts most major insurances and Medicaid CMOs.

Norcross Counseling Resources (Doraville, Norcross, Peachtree Corners)

Sutherland Psychotherapy Associates

770-450-5374

4989 Peachtree Parkway, Suite 200, Norcross
www.sutherlandtherapy.com

Payment: accepts most major insurances and Medicaid CMOs.

Treats mental health needs and substance abuse.

Arise Renewed Counseling

470-261-1392

5161 Brook Hollow Pkwy Suite 224, Norcross
<https://www.ariserenewedcounseling.com/>

Payment: accepts Aetna, Cigna, United Healthcare, Anthem BCBS, Oxford, Oscar Health
Offers virtual appointments.

Alianza Terapeutica Latina (with View Point Health)

770-449-5259

6020 Dawson Blvd, Suite 1, Norcross
<https://www.myviewpointhealth.org/>

Payment: accepts Medicaid CMOs; fees vary based on clinician and begin at \$75 for those who are uninsured.

Spanish-speaking providers; offers mental health and substance abuse treatment.

Counseling Institute of Atlanta

404-630-1361

5855 Jimmy Carter Blvd Suite 200, Norcross
<https://www.counselinginstituteofatlanta.com/>

Payment: does not accept insurance.
Spanish, Portuguese, & English-speaking therapists; offers medication management and assessments for ADHD, Autism, SSDI, immigration, and workers compensation.

LifeStance Health (formerly Georgia Behavioral Health Professionals)

470-938-6670

5635 Peachtree Pkwy, Suite 180, Norcross
<https://www.mygbhp.com/>

Payment: accepts Aetna, Beacon Health, BCBS, Cigna, Humana, Kaiser, Magellan, Medicare, Tricare, United Healthcare.

A Place to Grow

404-775-3050

6015 Atlantic Blvd Suite A, Norcross
<https://www.aptgc.com/>

Payment: accepts Aetna, Cigna, Amerigroup, CareSource, United Healthcare, Optum, Magellan, Humana.

Offers brainspotting for trauma and play therapy, anger management and social skills groups.

Counseling Services of Atlanta

678-444-4505

4006 Holcomb Bridge Rd Ste 210, Norcross
<https://www.counselingservicesofatlanta.com/>

Payment: accepts most insurances, including Medicaid CMOs.

Offers in person and virtual EMDR for trauma, play therapy, DBT groups, substance abuse treatment.

Offers in office and virtual counseling.

The Pathway Center for Psychotherapy

770-446-5642

4350B South Berkeley Lake Rd, Norcross
Payment: accepts Aetna, Anthem, BCBS, Cigna, Humana, United Healthcare; sliding scale may be offered (for Andrea Steen: \$40-65).

General Counseling Services

Mosaic Georgia

770-497-9122

Serves all of Gwinnett County

<http://mosaicgeorgia.org>

Provides support groups, counseling resources for survivors of sexual assault.

Families First

404-853-2800

4298 Memorial Drive, Decatur

<https://familiesfirst.org/>

Payment: Accepts most insurances (not Medicaid); offers sliding scale.
Offers virtual therapy.

Pathways Transition Programs

404-378-2300: Decatur office

404-378-2394: Winder office

<https://www.pathwaystransitionprograms.com/>

Payment: accepts most major insurances and Medicaid CMOs, some sliding scale spots.
Telehealth counseling, medication management, group therapy, intensive family intervention, psychological evaluations. Has several Spanish-speaking therapists.

Family Ties

678-460-0345

<https://familytiesinc.com/>

Payment: accepts Peach State, Medicaid; if uninsured might be able to waive fees or provide discounted rate.

In-home and telehealth counseling. Individual therapy, family therapy, medication management, community support/skill building, substance abuse counseling, parenting skills development. Has several Spanish-speaking therapists.

Illumination Counseling and Coaching

678-585-1966

4850 Sugarloaf Pkwy, Suite 209, Lawrenceville

www.illuminationcc.com

Payment: accepts most insurances and Medicaid CMOs.
Offers telehealth.

View Point Health

678-209-2411

Lawrenceville & Norcross offices

<https://www.myviewpointhealth.org/>

Payment: accepts Aetna, Ambetter, Amerigroup, BCBS, CareSource, Peach State, United Behavioral Health; offers sliding scale.
Offers medication management and counseling for mental health needs, has in-house pharmacy.

Georgia HOPE

Phone: 706-279-0405

Text: 706-847-4871

<https://gahope.org/>

Payment: accepts Medicaid CMOs, offers discounted self-pay rates (\$1 per minute of therapy, \$60 for assessment).
In-home and telehealth counseling for mental health and substance abuse, psychiatric services.

ACE Community Support Services

678-401-4596

<http://acecommunitysupport.com>

Payment: accepts Medicaid, Amerigroup, Peach State, CareSource.
Offers individual and group counseling, intensive family intervention (IFI), psychiatric services, substance abuse treatment. Offers virtual and in home services.

Turnaround Community Outreach

678-731-7727

www.turnaroundlives.com

Payment: accepts Medicaid, Amerigroup, Care Source, Peach State.

In-home and in office counseling. Individual and family therapy, community support, medication management.

Open Path Psychotherapy Collective

<https://openpathcollective.org/>

Directory of therapists who offer sessions at rates between \$30-\$60. Clients pay a one-time membership fee of \$59 and search for a therapist in the network. Clients can see who is accepting new clients and who is offering telehealth appointments.

Counseling Brothers of Atlanta: Directory

<https://www.thecboa.org/>

Nonprofit organization whose goal is to bridge the gap of access to mental health services in the Black community. Offers online directory of Black male therapists in the metro Atlanta area, develops culturally responsive trainings for mental health providers, and provides mentorship for Black male students pursuing mental health careers.



Cruse Medical Care

678-377-1108

1844 Old Norcross Rd, Lawrenceville

<http://crusemedical.com>

Payment: accepts BCBS PPO, Aetna, Peach State, Amerigroup, CareSource, Medicaid.
Support available in Spanish and English.

Social Empowerment Center

770-925-2095

2775 Cruse Rd, Suite 2601, Lawrenceville

www.socialempowermentcenter.com

Payment: accepts most insurances and CMOs; if client has never had Medicaid and is uninsured, no charge for services.

Offers therapy in home and office, community support, & medication management.

Counseling Institute of Atlanta

404-630-1361

5855 Jimmy Carter Blvd Suite 200, Norcross

<https://www.counselinginstituteofatlanta.com/>

Payment: does not accept insurance.

Spanish, Portuguese, & English-speaking therapists; offers medication management and assessments for ADHD, Autism, SSDI, immigration, and workers compensation.

View Point Health

678-209-2411

Lawrenceville & Norcross offices

<https://www.myviewpointhealth.org/>

Payment: accepts Aetna, Ambetter, Amerigroup, BCBS, CareSource, Peach State, United Behavioral Health; offers sliding scale.

Offers medication management and counseling for mental health needs, has in-house pharmacy.

Renewed Journey Counseling Services

404-625-5427

1479 Brockett Rd Suite 101, Tucker

<https://www.renewedjourney.org/>

Payment: accepts Aetna, Cigna, BCBS.
Offers psychiatry, individual therapy, play therapy, family therapy. Offers virtual and in-person sessions.

Metro Behavioral Care

770-622-2259: Duluth location

1810 Peachtree Industrial Blvd Ste 204, Duluth

770-513-7666: Lawrenceville location

227 Scenic Hwy Ste A, Lawrenceville

<https://www.mbcpsych.com/>

Payment: accepts Aetna, Anthem BCBS, Ambetter, Amerigroup, Beacon Health, Cigna, Humana, Medicare, Meritain, Optum, United Behavioral Health, United Healthcare.
Offers virtual appointments.

Psychiatric Professionals of Georgia

678-263-3080

1325 Satellite Blvd NW, Bldg 400, Suwanee

<https://psychiatricprofessionals.com/>

Accepts referrals for psychiatry and has therapists on staff for psychiatry clients. Accepts Aetna, Anthem/BCBS, Humana, Multiplan, PHCS, United Healthcare, Optum.

Pathways Transition Programs

404-378-2300: Decatur office

404-378-2394: Winder office

<https://www.pathwaystransitionprograms.com/>

Payment: accepts most major insurances and Medicaid CMOs, some sliding scale spots.
Telehealth counseling, medication management, group therapy, intensive family intervention, psychological evaluations. Has several Spanish-speaking therapists.

Georgia HOPE

Phone: 706-279-0405

Text: 706-847-4871

<https://gahope.org/>

Payment: accepts Medicaid CMOs, offers discounted self-pay rates (\$1 per minute of therapy, \$60 for assessment).

In-home and telehealth counseling for mental health and substance abuse, psychiatric services.

ACE Community Support Services

678-401-4596

<http://acecommunitysupport.com>

Payment: accepts Medicaid, Amerigroup, Peach State, CareSource.

Offers individual and group counseling, intensive family intervention (IFI), psychiatric services, substance abuse treatment. Offers virtual and in home services.

Family Ties

678-460-0345

<https://familytiesinc.com/>

Payment: accepts Peach State, Medicaid; if uninsured might be able to waive fees or provide discounted rate.

In-home and telehealth counseling, individual therapy, family therapy, medication management, community support/skill building, substance abuse counseling, parenting skills development. Has several Spanish-speaking therapists.

Turnaround Community Outreach

678-731-7727

www.turnaroundlives.com

Payment: accepts Medicaid, Amerigroup, Care Source, Peach State.

In-home and in office counseling. Individual and family therapy, community support, medication management.



Spanish Speaking Mental Health Providers

Cruse Medical Care

678-377-1108

1844 Old Norcross Rd, Lawrenceville

<http://crusemedical.com>

Payment: accepts BCBS PPO, Aetna, Peach State, Amerigroup, CareSource, Medicaid.
Offers psychiatry/medication management.
Support available in Spanish and English.

Bright Path Counseling

770-676-0737

3925 Harrison Rd, Suite 100, Loganville

<https://brightpathcc.com>

Payment: insurances accepted vary by clinician; accepted: CareSource, Cigna, United Healthcare, BCBS.
Offers play therapy, EMDR for trauma, Spanish speaking therapist Jennifer Mejias.

Angel Lopez Clinic

770-232-0555

2250 Satellite Blvd, Suite 175, Duluth

<https://www.angellopezclinic.com/>

Payment: accepts most major insurances and Medicaid CMOs.
Support in English, Spanish, and Sign Language.

Rock Bridge Psychological Associates

770-925-7898

5440 Lawrenceville Hwy, Lilburn

<https://rockbridgepsych.com>

Payment: accepts some insurances. Offers Spanish and English-speaking therapists. LGBTQ affirming. Virtual appointments only.

Pathways Transition Programs

404-378-2300: Decatur office

404-378-2394: Winder office

<https://www.pathwaystransitionprograms.com>

Payment: accepts most major insurances and Medicaid CMOs, some sliding scale spots.
Offers telehealth counseling, medication management, group therapy, intensive family intervention (IFI), psychological evaluations. Has several Spanish-speaking therapists.

Counseling Institute of Atlanta

404-630-1361

5855 Jimmy Carter Blvd Suite 200, Norcross

<https://www.counselinginstituteofatlanta.com/>

Payment: does not accept insurance
Offers therapy, medication management, and assessments for ADHD, Autism, SSDI. Offers virtual appointments. Spanish, Portuguese & English-speaking therapists.

Guzman Psychotherapy

678-506-7061

3295 River Exchange Drive Ste 312, Peachtree Corners

<https://guzmanpsychotherapy.com>

Payment: \$150 per session; does not accept insurance; offers some reduced fee slots.
Spanish and English -speaking therapist; specializes in immigration issues.

Atlanta Counseling & Diagnostics Center

770-676-0589

2090 Sugarloaf Pkwy #115, Lawrenceville

<https://acadccares.org>

Payment: accepts Ambetter, Peach State, CareSource, Aetna, BCBS, Cigna, Magellan.

The Road to Recovery

770-220-2885

<https://www.rdtorecovery.com/>

Payment: does not accept insurance. Individual counseling fee is \$85 and family counseling fee is \$95. Offers in-person and telehealth therapy.
Providers speak Spanish and English.

Family Ties

678-460-0345

<https://familytiesinc.com/>

Payment: accepts Peach State, Medicaid, if uninsured can possibly waive fees or discount rate.
Offers in-home and telehealth counseling, offers individual therapy, family therapy, medication management, community support/skill building, substance abuse counseling, parenting skills development. Has Spanish-speaking therapists.

Alianza Terapeutica Latina (with View Point Health)

770-449-5259

6020 Dawson Blvd, Suite 1, Norcross

<https://www.myviewpointhealth.org/>

Payment: accepts Medicaid CMOs; fees vary based on clinician and begin at \$75 for those who are uninsured.

Spanish-speaking providers; offers mental health and substance abuse treatment.

Teresa Colman

tcolmanlpc@yahoo.com

Payment: accepts Aetna, Anthem, BCBS.

Offers only telehealth counseling. Speaks Spanish and English

Ser Familia

678-363-3079

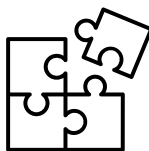
5000 Peachtree Industrial Blvd Ste 160, Norcross

3594 Baxley Point Drive, Suwanee

<https://serfamilia.org/>

Payment: no fee is charged.

Spanish-speaking provider that includes the whole family



Grief Resources

Kate's Club

404-347-7619

1190 W Druid Hills Drive NE, Ste T80, Atlanta

<http://katesclub.org/>

Kate's Club offers many activities, like therapeutic group activities, recreational outings, support groups, and Camp Good Mourning. Activities are available at the Atlanta clubhouse location, the Newnan clubhouse location, or virtually.

Camp MAGIK

404-790-0140

<http://www.campmagik.org>

Camp MAGIK is a weekend camp for youth with options for parents/guardians to attend sessions. Camp is held three times per year, and there are groups for youth aged 7-11 and 12-17. Camp is free for youth and \$25 for parents/guardians. Camp Erin is a weekend camp for youth ages 6-17, and the application is also at this website.

The Compassionate Friends

<http://www.tcfatlanta.org/>

Compassionate Friends offers support for families who have lost a child of any age. Support groups are for adults.

Gwinnett County Chapter meets on the third

Thursday of each month at 7:00 pm at the Community Center at Rhodes Jordan Park (100 E Crogan St, Lawrenceville). Contact June at 770-757-4927 or Patty at 770-883-9967.

Johns Creek Chapter meets on the first Tuesday of each month at 7:00 pm at Johns Creek United Methodist Church, Room 204 (11180 Medlock Bridge Rd, Duluth). Contact Karen at 770-355-7833 or Pat at 404-735-8962.

Carry on Youth

<https://www.carryonyouth.org/>

Provides mentoring and recreational activities for youth who have lost a parent. Referral can be completed online.

Rainbows for All Children

<http://rainbows.org/>

New Mercies Christian Church in Lilburn: free grief support group for 1st – 10th graders. Contact Starr Rayford at 404-993-0867 or

StarrRayford@comcast.net.

First United Methodist Church of Lawrenceville: free grief support groups for pre-k - 8th graders on Wednesday nights from 6:30-7:30. Contact Steve Burns at 770-963-0386 x 157 or

sburns@fumclv.org.

Camp Stars

404-869-6051

<https://vnhs.org/hospice-atlanta/camp-stars/>

Camp STARS bereavement camp for families is a weekend camp that happens every year in November. There is no cost for camp other than a small administrative fee of \$40 per family. Camp STARS In Town is a one-day workshop in the Atlanta area that happens in March.

Circle Camps

770-687-3066

<https://www.circlecamps.org/>

Circle Camps offers a week-long free camp for female-identifying kids age 8-11 who have experienced the death of a parent. Camp is over the summer and is in Winder or Rutledge.

Grief Share

<https://www.griefshare.org/>

Find weekly support groups for adults near you. Some meetings are virtual.

Manna

770-495-9775

3305 Breckinridge Blvd, Duluth

<https://mannafund.org>

Payment: accepts BCBS, Beacon Health, Cigna, Humana, United Healthcare, United Behavioral Health. Single-case agreements with Medicaid, CareSource, Peach State, Magellan, Medicare.

Offers reduced fees based on need.

Non-profit provides financial assistance for eating disorder treatment for those without insurance or with inadequate coverage.

Treatment facility offers partial hospitalization (PHP), intensive outpatient (IOP), and outpatient services. PHP and IOP are open to males and females ages 12 and up. Family IOP program is for parents or family members of those receiving eating disorder treatment. Offer monthly alumni support group. Virtual and in-person.

The Renfrew Center

1-800-736-3739

50 Glenlake Pkwy Ste 120, Atlanta

<https://renfrewcenter.com>

Payment: accepts Aetna, BCBS, Cigna, Optum/United Behavioral Health, Humana (call to ask about your insurance if not listed here).

Offers day treatment, intensive outpatient (IOP), and outpatient treatment. Has specialized treatment for adolescents. Virtual and in-person.

Veritas Collaborative

770-871-3750

Admissions/Inquiries: 888-875-5812

41 Perimeter Center East, Ste 250, Dunwoody

<https://veritascollaborative.org>

Payment: Aetna, Anthem/BCBS, Cigna, Humana, Kaiser, Magellan, Medicaid CMOs, United Healthcare/Optum

Offers outpatient, intensive outpatient (IOP), partial hospitalization (PHP), residential treatment, and inpatient treatment. Has child and adolescent program for all genders ages 17 and younger. Has adult program. Virtual and in-person.

Center for Discovery

888-617-0072

1364 Manget Way, Dunwoody

3390 Peachtree Rd NE #1150, Atlanta

<https://centerfordiscovery.com>

Payment: accepts BCBS, Cigna, Kaiser, Humana, Magellan, Optum, TriCare (see full list online)
Dunwoody location offers residential treatment for youth ages 11-18 of all genders.

Atlanta location offers intensive outpatient (IOP) and partial hospitalization (PHP), for all genders and ages. Virtual and in-person.

Offers many free online support groups, including Center for Discovery alumni support and meal support, Spanish-speaking individuals in recovery, BIPOC individuals in recovery, adolescent individuals in recovery, loved ones of individuals in recovery, Spanish-speaking loved ones of individuals in recovery, community meal support.

Walden Behavioral Care

678-786-7422

Admissions: 888-305-2997

4625 Alexander Dr, Ste 200, Alpharetta

<https://waldeneatingdisorders.com>

Payment: accepts most commercial insurances.
Offers adolescent partial hospitalization (PHP) and intensive outpatient programs (IOP) as well as adult PHP and IOP for all genders. Virtual and in-person.

Solutions Program for Eating Disorders

516-625-9181

2386 Clower St, Bldg C Ste 100, Snellville

<https://solutionsprogram.net>

Payment: accepts Aetna, Anthem, Beacon Health, BCBS, Cigna and Evernorth
Offers individual and group therapy for disordered eating, as well as bariatric counseling. Virtual and in-person.

Counseling Services of Atlanta

678-444-4505

4006 Holcomb Bridge Rd Ste 210, Norcross

Payment: accept most insurances, including Medicaid CMOs.

Therapists Tara Anne Coppola, Magan Slack, and Dr. Amy Hamilton (telehealth only) offer eating disorder treatment for children, adolescents, and adults. Virtual and in-person.

Susan Berel

770-953-4744 x 40

3860 Windermere Pkwy #203, Cumming

<https://atlantapsychologist.net>

Payment: accepts Aetna, BCBS, Coventry, First Health, LifeSynch, Medicaid, Humana, Medicare, MHNNet, Tricare, Value Options.

Offers outpatient therapy for eating disorders and other concerns. Works with adolescents and adults. Virtual and in-person.

White Oak Counseling

678-250-3295

11555 Medlock Bridge Rd, Ste 100, Johns Creek

<https://white-oak-counseling.com>

Payment: out-of-network provider, also accepts HSA and FSA cards.

Therapist specializing in eating disorders with ages 12 and up. Virtual and in-person.

Gwinnett Counseling

470-238-8587

1400 Buford Hwy, Suite D1, Sugar Hill

<https://gwinnettcounseling.com>

Payment: accepts Aetna and BCBS.

Therapists Shannon Jackson and Lauren Greenway specialize in eating disorder treatment. Virtual and in-person.

Clementine

770-637-0637

Admissions/Inquiries: 866-678-0923

126 Johnson Ferry Rd, Sandy Springs

<https://clementineprograms.com>

Payment: accepts most commercial insurances. Residential treatment program for adolescents of all genders

Transformations Therapy of Atlanta

770-217-7563

4566 Lawrenceville Hwy Ste 101, Lilburn

<https://transformationsatl.com>

Payment: accepts BCBS, Cigna, Aetna, United Healthcare, Humana, Ambetter. Reduced rates available.

Several therapists offer eating disorder treatment for children, adolescents, and adults. Virtual and in-person.

Compassion Cove

770-810-5789

3754 Lavista Rd, Ste 200, Tucker

<https://compassioncovecounseling.com>

Payment: offers sliding scale.

Several therapists specialize in eating disorder treatment for adolescents and adults. Virtual and in-person.

Pathways Unlimited

770-285-5503

331 Arcado Road Suite B, Lilburn

<https://pathways-unlimited.com>

Payment: accepts Medicaid, Amerigroup, Peach State, Aetna, BCBS, Cigna, United Health Care, Value Options, Humana.

Offers eating disorder treatment for children, adolescents, and adults.



Substance Abuse Treatment

Chris 180's TREE House Program

404-636-1457

<https://chris180.org/tree-house-program/>

No cost outpatient services and supports for youth aged 13-24 and their families, including individual and group therapy, peer support, psychiatric services.

Ser Familia

678-363-3079

5000 P'tree Industrial Blvd Ste 160, Norcross
3594 Baxley Point Drive, Suwanee

<https://serfamilia.org/>

Payment: no fee is charged.

Spanish speaking provider that offers Renovacion Juvenil, a 2-day workshop for Latino youth aged 13-18 around peer pressure, drug use, and more.

Sutherland Psychotherapy Associates

770-450-5374

4989 Peachtree Parkway, Suite 200, Norcross

www.sutherlandtherapy.com

Payment: accepts most insurances and Medicaid CMOs.

Treats mental health needs and substance abuse.

Atlanta Family Counseling Center

770-513-8988

190 Camden Hill Road, Suite A, Lawrenceville

<https://afcounseling.com>

Payment: accepts BCBS, Aetna, Humana, Cigna, Tricare, some EAPs.

Services for mental health and substance abuse.
Telehealth available.

This is Quitting

Text DITCHVAPE to 88709

*Free support for young people to stop vaping

View Point Health

678-209-2411

Lawrenceville & Norcross offices

<https://www.myviewpointhealth.org/>

Payment: accepts Aetna, Ambetter, Amerigroup, BCBS, CareSource, Peach State, United Behavioral Health, offers sliding scale.

Offers substance abuse treatment.

Alianza Terapeutica Latina (with VPH)

770-449-5259

6020 Dawson Blvd, Suite 1, Norcross

<https://www.myviewpointhealth.org/>

Payment: accepts Medicaid CMOs; offers sliding scale; fees vary based on clinician and begin at \$75 for those who are uninsured & undocumented
Spanish-speaking provider that offers substance abuse treatment.

Family Ties

678-460-0345

<https://familytiesinc.com/>

Payment: accepts Peach State, Medicaid; if uninsured might be able to waive fees or provide discounted rate.

Offers in-home and telehealth counseling, substance abuse treatment. Has several Spanish-speaking therapists.

Georgia HOPE

Phone: 706-279-0405

Text: 706-847-4871

<https://gahope.org/>

Payment: accepts Medicaid, Amerigroup, CareSource, Peach State; discounted self-pay rates (\$1 per minute of therapy, \$60 for assessment).
Offers in-home and telehealth counseling and substance abuse treatment.

Become an Ex

<http://becomeanex.org>

*Free digital quit-smoking plan; register online



MEDICAL

The following resources have been categorized based on geographic region for your convenience. School personnel and/or parents are welcome to choose a resource from various geographic regions.

North Gwinnett Medical Resources (Auburn, Braselton, Buford, Hoschton, Sugar Hill, Suwanee)

Buford Health Center

770-614-2401

2755 Sawnee Ave, Buford

Monday – Friday, 8:00 – 5:00

Only WIC services are available at this location as of 3/2023.

Buford Pediatrics

678-804-9398

3700 Ridge Rd, Suite B, Buford

<https://www.bufordpediatrics.com/>

Accepts Medicaid CMOs and most insurances.

Four Corners Primary Care

770-806-2928

115 Towne Center Pkwy, Ste 113, Hoschton

<https://fcpchealth.com/>

Accepts Medicaid, Medicare, and most major insurances. Sliding scale available.

Staff speak English, Spanish, French, Portuguese.

Walk-ins accepted on first come, first served basis.

Delta Pediatrics

678-765-6749

3966 South Bogan Road, Building B, Buford

<http://www.deltapediatrics.com/>

Accepts Medicaid CMOs and most insurances. Discounted rate available for self-pay clients. Walk-in appointments accepted. Staff speak Spanish and English.

Longstreet Pediatrics

678-207-4200: Braselton

770-932-8519: Buford

1270 Friendship Rd, Suite 210, Braselton

4095 S Lee Street, Buford

<https://longstreetclinic.com>

Accepts Medicaid CMOs and most insurances.

St Joseph's Pediatrics

770-904-5252

4485 Tench Road, Suwanee

Accepts Medicaid CMOs and most insurances.

Lilburn Medical Resources (Lilburn, Stone Mountain, Tucker)

Lilburn Pediatrics

770-381-0307

4025 Lawrenceville Hwy, Suite B, Lilburn

Accepts Medicaid CMOs and most insurances.

Dr. Nguyen speaks Vietnamese, and staff speaks Spanish.

Pediatric Partners of Gwinnett

770-923-6400

4120 Five Forks Trickum Rd, Ste 102, Lilburn

<https://gwinnettchildren.org/>

Accepts Medicaid CMOs and most insurances. Provides primary care, speech and occupational therapy, and diagnostic and therapy services for children with Autism Spectrum Disorder.

Lawrenceville Medical Resources (Dacula, Lawrenceville)

Four Corners Primary Care

770-806-2928

175 Gwinnett Drive, Suite 213, Lawrenceville

<https://fcpchealth.com/>

Accepts Medicaid, Medicare, and most major insurances. Sliding scale available.

Staff speak English, Spanish, French, Portuguese.

Walk-ins accepted on first come, first served basis.

Lawrenceville Health Center

770-339-4283

455 Grayson Hwy, Suite 300, Lawrenceville

Monday – Friday, 8 – 5, appointment required

Accepts Medicaid CMOs and most insurances.

Provides child & adult immunizations, child health checks and dental exams, school screenings, WIC,

pregnancy and prenatal services, STD screening and treatment, PrEP for HIV prevention, refugee

health services. *Dental services unavailable as of 3/2023.

The Hope Clinic

770-685-1300

<http://www.hopeclinicgwinnett.info/>

121 Langley Drive, Lawrenceville

Accepts Medicaid, Medicare, and some

commercial plans. Offers sliding scale fees for

those who are uninsured or underinsured. To

receive financial assistance rate, bring one of the following: 2 consecutive months' pay stubs, most

recent W2, employer statement verifying income, shelter letter, treatment program letter, letter from

case worker, letter from church or health center.

Walk-in appointments for existing patients are

allowed for acute illness on Monday, Tuesday,

Thursday from 7:30-1:30 and on Wednesday and

Friday from 7:30-10:30.

Truth's Community Clinic

770-277-4675

www.truthsclinic.org

250 Langley Drive, Suite 1316

Lawrenceville, GA 30046

Qualification Appointment Hours:

10:00 am – 3:00 pm Monday

Offers services for those who are uninsured and who meet the federal poverty level.

Medical Clinics are on the first and third Tuesday.

Medical services offered are related to diabetes,

high blood pressure, asthma, and thyroid

concerns. Appointment needed; no walk-ins.

Suwanee Pediatrics

678-442-0205

1155 Lawrenceville Suwanee Rd, Lawrenceville

<https://suwaneepediatrics.com/>

Accepts Medicaid CMOs and most insurances.

Children's at Hamilton Creek

404-785-5437

2240 Hamilton Creek Pkwy, Suite 600, Dacula
Urgent Care Center. Accepts Medicaid CMOs and

most insurances.

Duluth Medical Resources (Berkeley Lake, Duluth)

Children's At Satellite Boulevard
404-785-5437
2660 Satellite Boulevard, Duluth
Urgent Care Center

Shifa Clinic
770-300-0067
3650 Savannah Place Drive, Duluth
<https://www.icnarelief.org/shifaduluth/>
10:00-1:00 Saturdays

Free clinic that serves those who are uninsured and under-insured and under 200% of the federal poverty level. Patients need a photo ID and must be a Georgia resident. Email shifaappointmentduluth@icnarelief.org to schedule appointment.

Medlock Pediatrics
770-813-9775
3497 Duluth Park Lane, Duluth
<https://www.medlockpediatricsga.com/>
Accepts Medicaid CMOs and most insurances.

Kidzcare Pediatrics
770-559-4315
3772 Satellite Blvd, Suite 101, Duluth
<https://www.kidzcarepediatrics.net/>
Accepts Medicaid CMOs and most insurances.

Southeast Gwinnett Medical Resources (Grayson, Loganville, Snellville)

Hubbard Pediatric Group
770-203-1194
4495 Atlanta Hwy, Suite 200, Loganville
<https://www.hubbardpediatricgroup.com/>
Accepts Aetna, Ambetter, Amerigroup, Cigna, Coventry, Peach State, United Healthcare.

Grayson Pediatrics
678-381-2630
297 Cooper Road, Loganville
<https://graysonpediatrics.com>
Accepts Aetna, Amerigroup, BCBS, CareSource, Cigna, Coventry, Humana, Peach State, United Healthcare.



Norcross Medical Resources
(Doraville, Norcross, Peachtree Corners)

**CPACS (Center for Pan Asian Community Services):
Cosmo Health Center**

770-446-0929

6185 Buford Hwy Bldg. B, Peachtree Corners

www.cpacscosmo.org

Offers primary care, dental care.

Accepts Medicaid, Medicare, and most insurances.

Offers discounts based on income if uninsured.

Transportation available within a 12-mile radius.

Multiple languages spoken, including Spanish,
Chinese, Korean.

Norcross Health Center

770-638-5700

5030 Georgia Belle Court, Norcross

Monday – Friday 8:00 – 5:00

Accepts most insurances and CMOs.

Offers child & adult immunizations, child health
checks, school screenings, WIC, pregnancy and
prenatal services, STD screening and treatment.

Pediatric Partners of Gwinnett

770-923-6400

4121 Steve Reynolds Blvd, Ste 101, Norcross

6450 Spalding Drive, Peachtree Corners

<https://gwinnettchildren.org/>

Accepts Medicaid CMOs and most insurances.

Provides primary care, speech and occupational
therapy, and diagnostic and therapy services for
children with Autism Spectrum Disorder.

Absolute Care Pediatrics, L.P.

678-866-3596

5635 Peachtree Pkwy, Ste 140, Peachtree Corners

Accepts Medicaid, Peach State, Amerigroup,
CareSource, Ambetter. Telehealth visits for self-
pay clients are \$40.

Good Samaritan Health Center

East Gwinnett: 770-806-0162

1175 Commercial Court, Norcross

West Gwinnett: 678-280-6630

5949 Buford Hwy, Norcross

<https://goodsamgwinnett.org>

Offers medical and dental care and
discounted medication. Serves those who
are uninsured or underinsured. Initial
medical appointments are \$110, and initial
dental appointments are \$125. Additional
medical appointments range from \$40-85,
and dental treatment costs vary.

Southside Medical Center

404-688-1350

<https://southsidemedical.net>

5127 Jimmy Carter Blvd., Suite 205, Norcross

Hours: 9:00 am – 6:00 pm Monday-Friday; 9:00
am – 1:00 pm 1st & 3rd Saturday

Provides medical, dental, optometry, pharmacy,
substance abuse, mental health care.

Accepts Medicaid, Medicare, most insurances (not
Kaiser). Sliding fee scale available for uninsured or
underinsured patients.

Four Corners Primary Care

770-806-2928

5300 Oakbrook Pkwy, Bldg 100 Ste 130, Norcross

<https://fcpchealth.com/>

Accepts Medicaid, Medicare, and most major
insurances. Sliding scale available.

Provides adult care, pediatrics, family planning,
nutrition counseling, podiatry, pharmacy. Walk-ins
accepted on first come, first served basis
Staff speak English, Spanish, French, Portuguese.

General Medical Resources

Division of Family and Children Services

1-877-423-4746

(For case specific information and other inquiries)
Lawrenceville (Main County Office): 678-518-5500
Norcross (Satellite Office): 770-441-8800
<https://gateway.ga.gov/access/>
Apply online for CAPS (childcare assistance), TANF, SNAP (food stamps), WIC, Medicaid, or PeachCare.

St. Vincent de Paul

678-892-6163

<https://svdpgeorgia.org/>

Community pharmacy, over the counter medications and medical equipment, Medicaid enrollment assistance, financial assistance for medical care and prescriptions.

Mercy Care

678-843-8600

<https://mercyatlanta.org/>

Health care (general medicine, dental, vision, pediatrics and immunizations) at permanent clinics as well as at mobile sites (no Gwinnett locations, several locations in Atlanta). Offers sliding fee scale, based on proof of income, with payments as low as \$35 per visit. Persons experiencing homelessness and those with proof of no income may not be charged a fee. Payment plans also available. Certified Application Counselors can help families apply for health insurance and understand options.

Obria Medical Clinic

770-338-1680

565 Old Norcross Rd, #200, Lawrenceville
<https://obria.org>

Accepts all Georgia Medicaid plans.
Provides well-woman care, pregnancy testing, STD testing/treatment. Provides affordable prenatal care and does not provide abortion referrals.

Georgia Charitable Care Network

678-389-3333

<http://charitablecarenetwork.org/>

Connects the uninsured with non-profit medical and dental clinics across Georgia.

Gwinnett Health Finder

<https://gwinnetthealthfinder.org/>

Online database powered by the Gwinnett Coalition whose mission is to link those who are uninsured or underinsured with quality, affordable healthcare. Families can search for Adult Clinics, Pediatric Clinics, Specialty Care, Dental Care, or Mental Health Care by location.



Prescription Assistance

Please be aware that there are high numbers of companies that advertise free or reduced- cost prescriptions online. Thoroughly research any company to determine if they are a legitimate and reputable business before you decide to access their services. In addition, please be careful of any company that expects payment for their help in linking you to assistance programs.

Local Cooperative Ministries

City	Duluth 770-623-9563	Lawrenceville 770-339-7887	Lilburn 770-931-8333	Norcross 770-263-8268	North Gwinnett 770-271-9793	Southeast Gwinnett 770-985-5229
Types of Assistance	Rent, Utilities, Food, Prescriptions	Rent, Utilities, Food, Clothing, Prescriptions	Rent, Utilities, Food, Clothing, Prescriptions	Rent, Utilities, Food, Prescriptions	Utilities, Food, Prescriptions	Utilities, Food, Prescriptions
Eligible Zip Codes	30096,30097	30019, 30043, 30044, 30045, 30046	30047, 30084, 30087	30071, 30360, 30084, 30092, 30093	30024, 30518, 30519	30078, 30039, 30017, 30052

Databases of Patient Assistance Programs for Prescription Medications

Name	Website	Other Information
Needy Meds Helpline	https://needymeds.org	1-800-503-6897
Medicine Assistance Tool	https://medicineassistancetool.org	
Rx Assist	https://rxassist.org	info@rxassist.org
Rx Hope	https://rxhope.com	

St. Vincent de Paul

2050 Chamblee Tucker Road, Atlanta
<https://svdpga.org>

SVdP's Community Pharmacy supports residents of Georgia with income less than or equal to 200% of the FPL. Photo ID, proof of address, income verification, and valid prescription required. Pharmacy application can be completed on the website. Medications can be picked up, delivered within 20-mile radius, or mailed.

Your Rx Card

<https://yourrxcard.com/>

Receive discounts up to 75% on prescription medications. No eligibility restrictions; everyone can access.

Good Pill

<https://goodpill.org>

Non-profit home delivery pharmacy for those without insurance or whose co-pays are too high.

Salvation Army

404-486-2888

3455 Sugarloaf Pkwy, Lawrenceville

<https://southernusa.salvationarmy.org/gwinnett/>
 Project SHARE provides emergency financial services for prescriptions, rent/mortgage, utilities, and more.

Georgia Drug Card

<https://georgiadrugcard.com>

Receive discounts up to 80% on prescription medications. Available to all Georgia residents regardless of income.

Patient Advocate Foundation Co-Pay Relief

<https://www.copays.org>

Provides direct financial assistance with co-payments, co-insurance and deductibles. Must be insured. Can complete application online.

Vision

Georgia Lions Lighthouse Foundation

404-325-3630

5582 Peachtree Rd, Chamblee

<https://lionslighthouse.org/>

Provides eye exams and glasses. Must provide ID, proof of residency (in Georgia for at least 12 months), and proof of income. Walk-in hours are Tuesday, Wednesday, and Thursday from 10-1 and 2-3:30, no appointment needed.

Application is on website.

New Eyes

973-376-4903

<https://new-eyes.org/>

Glasses can be provided if clients have a prescription less than 2 years old.

Wraparound Social Worker can submit requests.

Prevent Blindness Georgia

404-266-1548

739 West Peachtree St. Suite 200,
Atlanta, GA 30308

<https://georgia.preventblindness.org/>

Provides information about how to access glasses for children and adults with a prescription and how to access eye exams for children and adults without a prescription who are not eligible for Medicaid or Peach State.

Central Outreach and Advocacy Center

404-659-7119

201 Washington Street SW, Atlanta, GA 30303

https://centraloac.org

For adults experiencing homelessness – vision exam and glasses are provided. Call to schedule appointment.

VSP Eyes of Hope

1-888-290-4964

<https://www.vspvision.com/eyes-of-hope.html>

Certificates for vision exam and glasses for those without vision insurance and at or under 200% of the federal poverty level. Once a certificate is obtained, the VSP Vision website can be used to find a participating provider.

*GCPS has access to certificates; please see your county cluster nurse.

Mercy Care

678-843-8600

5134 Peachtree Road, Chamblee

424 Decatur Street SE, Atlanta

<https://mercyatlanta.org>

Chamblee and Decatur Street clinics provide eye care. Some patients qualify for free eyeglasses from Georgia Lions Lighthouse Foundation.

America's Best Contacts & Eyeglasses

Duluth: 770-497-8100

3675 Satellite Blvd, Duluth

Buford: 678-318-2600

3350 Buford Drive, Ste. B-230, Buford

Snellville: 470-415-5706

1679 Scenic Hwy. S, Suite 203, Snellville

Norcross: 678-896-4550

3200 Holcomb Bridge Rd, Norcross

<http://www.twopair.com/>

Get 2 pairs of glasses for \$79.95 with a free eye exam. This includes single vision plastic lenses and frames tagged \$69.95. Eye exam regularly \$59 without the two pair offer.

Zenni Optical

<http://www.zennioptical.com/>

Online resource with affordable glasses starting at \$6.95. Insurance is not accepted.

Dental

CPACS Cosmo Dental

770-674-7980

<https://cpacscosmo.org/dental/>

6185 Buford Hwy Building A-1, Norcross
Dental exams and treatment for those with low income, without insurance, and/or limited English proficiency. Multi-lingual providers.

Truth's Community Clinic

770-277-4675

250 Langley Drive, Suite 1316, Lawrenceville

www.truthsclinic.org

Call the clinic on Mondays between 10-3 to see if you qualify for services. Dental Clinics offered the first and third Thursday of the month. Can provide fillings and extractions; cannot provide root canals, crowns, or dentures. Donation of \$20 is suggested. Appointment is required; no walk-ins. Must reside in Lawrenceville, Dacula, Buford, or Auburn in Gwinnett County.

Mercy Care

678-843-8600

<https://mercyatlanta.org>

Routine and emergency dental care available for adults and children. Appointments recommended but walk-ins available on first come, first served basis. Offers sliding fee scale with payments as low as \$35, but those experiencing homelessness or with proof of no income may not be charged.

Ben Massell Dental Clinic

404-881-1858

700 14th Street NW, Atlanta

<https://benmasselldentalclinic.org/>

Free dental care for uninsured adults 18 and older whose household income is at or below 125% of the federal poverty level who live in metro Atlanta (including Gwinnett). Cleanings, fillings, and extractions are offered.

Gwinnett County Health Departments

www.gnrhealth.com

Lawrenceville location: 770-339-5642

455 Grayson Hwy, Ste 300, Lawrenceville

Norcross location: 770-638-5708

5030 Georgia Belle Ct, Norcross

Dental exams and treatment for youth ages 1-19.

*Lawrenceville location temporarily closed.

Norcross location has limited appointments.

Good Samaritan Health Centers

Buford Hwy: 678-280-6630

5949 Buford Hwy, Norcross

Commercial Ct: 770-806-0162

1175 Commercial Court, Norcross

<https://goodsamgwinnett.org/dental-services/>

Dental services available to households with income at or below 200% of the federal poverty level. Appointments are required. Initial dental appointments are \$125, and additional fees vary.

Perimeter College Dental Hygiene Clinic

770-274-5140

2101 Womack Road, Dunwoody

<https://perimeter.gsu.edu/dh/#clinic>

Treatment provided by dental hygiene students under supervision. Oral debridement, x-rays, and fluoride available for \$20-75. Appointments last 3.5 hours due to educational process.

Pregnancy and Teen Parenting

Planned Parenthood—Gwinnett Center 404-688-9300

798 Lawrenceville Suwanee Rd Ste 300,
Lawrenceville

<http://www.plannedparenthood.org>

Offers emergency contraception, birth control, pregnancy tests, abortion pill up to 6 weeks, STD treatment, sexual and reproductive healthcare.

Most insurances are accepted, and financial assistance is available for those without insurance. Providers speak English and Spanish and have a translation service for other languages.

Obria Medical Clinic 770-338-1680

565 Old Norcross Rd. Suite 200, Lawrenceville
<https://obria.org>

Pregnancy tests, prenatal care, STD treatment, well-woman care, parent education and support. Does not offer abortion education or abortion referrals. Accepts Georgia Medicaid plans and offers affordable care for those without insurance.

Northside Gwinnett OBGYN

Lawrenceville: 678-775-0600

1942 Atkinson Rd Ste 100, Lawrenceville
Peachtree Corners: 678-775-0600

5277 Peachtree Pkwy, Peachtree Corners
<https://northsidegwinnettobgyn.com/>

OB/GYN practice that accepts most major insurances, including Medicaid and Medicaid CMOs.

Quality Rated Childcare 1-877-255-4254

<https://qualityrated.org>

Locate childcare providers, including after school care. Find information about Early Head Start, Head Start, and pre-kindergarten.

Phoenix Parenting Center 770-513-6876

<https://www.gcpsk12.org/domain/2000>

On-site free childcare for children 6 weeks old to 2 years old during first, second, and third periods offered for students at Phoenix High School. Parenting center students must reside in Gwinnett County, have their own transportation, have only one child, and provide a birth certificate and immunization form. Students must also meet all requirements to enroll in Phoenix High School.

Centro Prenatal De Georgia

Lawrenceville: 770-227-0230

575 W. Pike Street, Lawrenceville
Norcross: 470-514-5818

5195 Jimmy Carter Blvd, Norcross

<https://www.centroprenataldega.com/>

Offers family planning, prenatal and postnatal care, annual exams, STD treatment. Offer affordable services for those without insurance. Spanish and English-speaking providers.

Helping Mamas

770-985-8010

4487 Park Drive Ste A1, Norcross

<https://helpingmamas.org/>

Provides diapers, wipes, and period products. Check the online calendar for events that are open to all and do not require registration or complete the online form to be connected to a partner agency who can refer you to receive more individualized products.

Clinica de la Mama

770-613-0670

5050 Jimmy Carter Blvd, Norcross
Spanish speaking OB/GYN provider.

Wellroot
770-531-3063

<https://wellroot.org/our-programs/hfa/>

The **First Steps Georgia** program connects parents of children aged birth-5 with education, resources, and referrals.

Healthy Families America is a voluntary program that parents can enroll in before the birth of their child and until their child is three months old. Family Support Specialists offer individualized in-home support and guidance until the child is three years old. Eligibility: residents of Gwinnett or Hall counties, receiving Medicaid or uninsured.

Staff speaks English and Spanish.

Referrals can be made on the website.

Centro Internacional de Maternidad (CIMA)
678-672-4645

5161 Brook Hollow Pkwy Ste 200, Norcross
<https://cimasalud.net/>

Family planning, including birth control, pregnancy tests, prenatal care, delivery care, postnatal care, STD treatment, annual exams.

Accepts most insurances and Medicaid.

Providers speak English, Spanish, and Portuguese and have a Vietnamese translator.

Childcare & Parents Services (CAPS)
1-833-442-2277

<https://caps.decal.ga.gov/>

Subsidizes the cost of childcare. New families applying for CAPS must be in a priority group: families referred by Child Protective Services, children in DFCS custody, families experiencing domestic violence, families of children with disabilities, families of children enrolled in Georgia pre-k, families participating in or transitioning from TANF, families who have experienced a natural disaster, families who lack fixed, adequate, and regular housing, families with no or very low income (equal to or less than 50% of the State Median Income), families referred by Grandparents Raising Grandchildren, **minor parents 20 years old and younger, and student parents.**

Apply for CAPS at <http://www.gateway.ga.gov/>

Abiding Love
770-769-1308

<https://abidingloveadopt.com>

Offers birth parent mentors and additional services for parents pre- and post-adoption. Mentors are available regardless of the adoption agency that was used.





STUDENTS WITH DISABILITIES

Psychotherapy, Occupational Therapy, Speech Therapy, Physical Therapy

The Lighthouse Behavioral Health Center

770-767-0256

<https://thelighthousebhc.com>

Payment: accepts Aetna, Alliant, BCBS, Cigna, Humana, Oscar, United Healthcare.

Offers telehealth appointments for psychotherapy. Therapist Jenny Casteel works with adolescents with learning disabilities.

Mind and Motion

678-749-7600

5050 Research Ct, Suite 800, Suwanee

<https://mindmotioncenters.com>

Payment: accepts Aetna, Ambetter, Amerigroup, BCBS, CareSource, Cenpatico/Peach State, Cigna, Humana, Medicaid, Meritain, TriCare, UMR, United. Psychological and neuropsychological evaluations with brain mapping. Occupational, physical, and speech therapy. Individual, family, and group psychotherapy, play therapy, and parent training.

Offers neurotherapy and biofeedback. Offers social skills groups for children ages 5-12.

Treats anxiety disorders, developmental and intellectual disabilities, executive functioning disorders, genetic disorders, sensory disorders, TBI.

Georgia Autism Center

770-696-4384

4046 Wetherburn Way, Ste 1,4,5,6

Peachtree Corners

<https://georgiaautismcenter.com>

Payment: accepts Aetna, BCBS, CareSource, Cigna, Humana, Medicaid, Peach State.

Neurocognitive, developmental, and educational evaluations, Katie Beckett Deeming Waiver evaluations, Now/COMP Waiver evaluations, coordination of care, family support and advocacy

Gwinnett Psychology: Dr. Cole-Straub

507-722-2402

3611 Braselton Hwy Ste 204, Dacula

<https://gwinnettpsychology.com>

Payment: accepts Aetna, Amerigroup, Peach State. Psychotherapy for Autism Spectrum Disorder. Offers in-office or telehealth services

Peachtree Pediatric Psychology

404-796-7777

750 Hammond Drive, Bldg. 10, Suite 100, Atlanta

<https://peachpsychology.com>

Payment: accepts Peach State, CareSource, Medicaid, BCBS.

Psychological and psychoeducational evaluations, ASD and developmental evaluations, Katie Beckett Deeming Waiver evaluations, and NOW/COMP Waiver evaluations.

Specializes in assessing Autism Spectrum Disorder, ADHD, developmental delays, learning problems, emotional disorders, and behavioral issues.

Hopebridge Autism Therapy Centers

Suwanee: 470-632-4990

4000 Smithtown Road, Suwanee

Snellville: 470-327-9193

2059 Scenic Hwy N, Ste 101, Snellville

Payment: accepts most commercial insurances and Medicaid.

Diagnosis and evaluations, Applied Behavior Analysis (ABA) therapy, occupational therapy, speech therapy, feeding therapy, family training.

Gateway Pediatric Therapy

770-790-5437

3655 Howell Ferry Rd Ste 400, Duluth

<https://gatewaypediatrictherapy.com>

Payment: accepts Aetna, Anthem, Cigna, Peach State, United, Optum.

Treats Autism Spectrum Disorders and related developmental disabilities using Applied Behavior Analysis (ABA), occupational therapy, and speech therapy.

Emory Autism Center

404-727-8350

1551 Shoup Court, Decatur

<http://psychiatry.emory.edu/programs/autism>

Assessment and diagnosis for ASD, behavioral support and ABA therapy, medication management. Childcare for children ages 1-5, including children with ASD. Support with transitioning to adulthood.

Peach State Pediatric Therapy, Inc.

770-904-6419

4992 Bristol Industrial Way, Buford

www.peachstatetherapy.com

Payment: accepts Medicaid, BCBS PPO, Beech Street, PHCS, Choice Care, Humana PPO, Nova Net. Social skills groups are \$50 per session. Occupational, physical, and speech therapy for children ages 0-21. Offers aquatic therapy, social skills groups, and summer camp.

Marcus Autism Center

404-785-9400

1920 Briarcliff Road, Atlanta

<http://www.marcus.org>

Comprehensive services to support children and adolescents with Autism. Services include Assessment & Diagnosis, ABA Therapy Program, School Consultation Program, Severe Behavior Program, Multidisciplinary Feeding Program, Language & Learning Program, Medical Services, Therapeutic Services, and Family Support & Care Coordination. Referral must come from a healthcare provider.

View Point Health (psychiatry & counseling)

678-209-2411

Lawrenceville & Norcross offices

<https://www.myviewpointhealth.org/>

Payment: accepts Aetna, Ambetter, Amerigroup, BCBS, CareSource, Peach State, United Behavioral Health; offers sliding scale.

Mental health services for Autism Spectrum Disorder.

Therapy Works

770-995-2379

1509 Atkinson Rd Ste 1100, Lawrenceville

www.therapyworkspc.com

Payment: accepts CareSource, Amerigroup, Kaiser, BCBS, United Healthcare.

Occupational, physical, and speech therapy for children ages 0-21.

Key Autism Services

470-740-0355

1130 Hurricane Shoals Rd NE, Ste 1800,

Lawrenceville

<https://www.keyautismservices.com/>

Payment: accepts Medicaid, Cigna, BCBS, United Behavioral Health, Optum, CareSource, Peach State, Amerigroup, ComPsych, Aetna, Ambetter. Diagnostic interviews, ABA therapy services, and parent coaching for young people with Autism Spectrum Disorder.

Medical/Financial Support for Youth with Disabilities

Children's Medical Services

770-339-4270 x 422

2570 Riverside Pkwy, Lawrenceville

<https://dph.georgia.gov/CMS>

DPH program that supports children ages 0-20 with a chronic medical condition who meet income requirements (less than 247% of FPL). Provides care coordination and linkage to resources, assistance with health care services and equipment not covered by insurance, access to specialty care clinics (closest location is Gainesville), transition planning for adolescents, assistance with transportation and translation. To enroll, reach out to GNR Health District Children 1st office at 770-339-4264 (for children under age 5) or the GNR Health District CMS office at 770-339-4270 x 422 (for children 5 and up).

Friends of Disabled Adults and Children (FODAC)

770-491-9014

4900 Lewis Road, Tucker, GA

<https://www.fodac.org>

Supplies and repairs medical equipment, provides home and vehicle modifications, offers computers and assistive technology. There is a \$25 registration fee for first-time clients.

TEFRA/Katie Beckett Medicaid

678-248-7449

Mailing: PO Box 172, Norcross 30091

Physical: 2211 Beaver Ruin Rd Ste 150, Norcross

<https://medicaid.georgia.gov/tefra>

Permits the state to disregard family income so disabled children 18 and under can access benefits. Eligibility is based on institutional level of care required by the child, and funds are used to care for the child in their home. Child's physician must provide documentation.

Mail the completed application found on the above website to the address above.

Champions for Children

1-866-584-3742

<http://www.championsforchildrenga.org>

Supporting children up to age 18 who live at home; have a physical, cognitive, developmental, or medical disability; are not receiving Medicaid; and have received a letter of care denial letter for the Katie Beckett waiver. Provides respite care, medical supplies and equipment, medical services and therapies, dental and optical services, travel reimbursement for medical appointments, and recreational or therapeutic activities. Apply by calling the phone number or emailing info@swga-easterseals.org.

Kiddos Clubhouse Foundation

678-527-3224

<https://kiddosclubhousefoundation.org>

Provides scholarships to families unable to pay for therapeutic services for their children with special needs. Application on website.

DBHDD NOW/COMP Waivers

404-244-5050

<https://dbhdd.georgia.gov/be-dbhdd/be-compassionate>

New Options Waiver (NOW) offers services and supports to those with intellectual and developmental disabilities so that they may remain living with their family or independently in the community. Comprehensive (COMP) waiver serves those with more intensive needs and primarily provides residential care for those with intellectual and developmental disabilities.

**Social Security Administration –
Supplemental Security Income**

1-800-772-1213

<https://www.ssa.gov/ssi/>

Program pays benefits to disabled adults and children who have limited income and resources. Children are eligible for SSI if they have a physical or mental condition that seriously limits their activities and if that condition has lasted or is expected to last more than one year or result in death. The application process can be started online or by phone, and an appointment will be scheduled with an SSA employee to complete the application. Determination letters are mailed 3-5 months after the application.

Duraline Medical Products

1-800-654-3376

<https://www.dmponline.com>

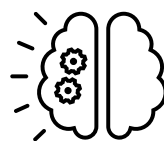
Order diapers and protective underwear for children and adults, as well as personal care products and urological supplies.

Georgia Pediatric Program (GAPP)

404-657-7882

<https://medicaid.georgia.gov/programs/all-programs/waiver-programs>

DCH program that supports medically fragile children under age 21 with skilled nursing or medically necessary personal care support. Children of families eligible for Medicaid can apply for GAPP. To apply, contact a provider agency directly. Link to list of providers on website.



Supportive Services for Youth with Disabilities

GCPS Parent Mentors

<http://www.parentmentors.org/mentor/gwinnett-county>

[Dawn Albanese: 678-301-7212](mailto:Dawn.Albanese@gcpsk12.org)

Dawn.Albanese@gcpsk12.org

Supports families of students receiving special education services by providing information and resources.

Families of Children Under Stress (FOCUS)

770-234-9111

3825 Presidential Pkwy Ste 103, Atlanta

<https://focus-ga.org>

Supports families of children from birth to age 29 with developmental or physical disabilities. Offers multiple monthly support groups – see website for group information, including groups in Suwanee and Lawrenceville. Has extensive online library of recorded workshops in the following areas: medical, self-care, special education, transitioning to adulthood, waivers and government programs. Offers yearly family summer camp, Extra Special Saturday (ESS) respite, summer day camp, adaptive swim team, monthly activities and overnight camps for teens and young adults. Offers grants for medical equipment or loans for medical equipment. To join FOCUS, complete a family intake on the website.

DBHDD Family Support Services

404-244-5050

<https://dbhdd.georgia.gov/family-support-services>

Students with a diagnosed developmental disability age 4 and up who are living with their families and are not receiving a NOW/COMP waiver are eligible. Assists families with locating and accessing resources and services.

Childkind

404-248-1980

1990 Lakeside Parkway, Ste 350, Tucker

<https://childkind.org>

The Take Charge! Program offers home-based services for parents and caregivers of children with complex medical and developmental diagnoses. The case manager and nurse team focus on child bonding, wellbeing, parenting, and family sustainability.

Parent to Parent of Georgia

770-451-5484

3070 Presidential Pkwy, Ste 130, Atlanta

<https://www.p2pga.org/>

Offers services to families and individuals from birth to 26 impacted by disabilities or special healthcare needs. Offers in-person and online support groups, trainings and archived webinars on many helpful topics, roadmap with resources for families, and special needs comprehensive resource database.

Metro East Georgia Learning Resources System

678-676-2417

1701 Mountain Industrial Blvd, Stone Mountain

<http://www.me.girs.org/>

Statewide network of 18 resource centers offering services to parents and educators of students with disabilities. Offer parent and teacher trainings and workshops; loan library of specialized instruction material, adapted toys, and equipment; and resource information for students with disabilities.

Bobby Dodd Institute

(Formerly All About Developmental Disabilities)

678-365-0071

2120 Marietta Blvd, Atlanta

<http://bobbydodd.org>

Offers continuum of support for all ages and levels of need for people with disabilities and their families. Programs for job training & supported employment, family support, benefits navigation, and access to the Georgia Community Trust. Apply for services online.

Lekotek of Georgia, Inc.

404-633-3430

1901 Montreal Rd Ste 126, Tucker

<http://lekotekga.org>

Play sessions for children ages 0-8 with special needs and their families to promote interactive and inclusive play. Fees are \$250 per year, and scholarships are available when needed.

Computer Club offered for ages 8-15, and Lekopals social/recreational group offered for young adults ages 15 and up. \$10/activity for Computer Club and Lekopals, and scholarships are available.

Hope House Children's Respite Center

770-969-8354

7225 Lester Road, Union City

<http://www.swchristiancare.org/hope-house>

Provides respite for caregivers of medically fragile children. Center includes multi-sensory activity room, hydrotherapy room, wheelchair accessible playground, and lots of crafts and fun activities.

Your Respite

<https://www.yourrespite.com/>

Hourly or overnight respite in your home for children with special needs up to age 19. Starting hourly rate is \$20, and overnight rates start at \$225. Parents can apply for scholarships if needed.

InCommunity

Atlanta: 404-634-4222

<https://incommunityga.org>

Supports those with intellectual and developmental disabilities, along with their families. Programs provide community living support, residential options, adult day programs, supported employment, family support funding, respite care, crisis support, and behavior support. Request services online.

Health Law Partnership (HeLP)

404-785-2005

975 Johnson Ferry Road, Atlanta

<https://healthlawpartnership.org>

HeLP is a community collaboration between healthcare providers and lawyers. HeLP serves patients of Children's Healthcare of Atlanta whose families have an income of less than 200% of the FPL. They provide legal services related to access to healthcare, SSI benefits, education, employment, family law, housing, permanency planning, and public benefits.

Bennett's Place Interactive Learning Center

678-878-4103

800 Lawrenceville Hwy, Lawrenceville, GA 30046

<https://www.bennettsplacega.com>

Skill building, after school care, respite care, and summer camp for students with special needs.

National Autism Association

<https://nationalautismassociation.org/>

Families of children with Autism who are prone to wander can order a Big Red Safety Box at no cost to them. Administrators and teachers working with students with Autism can order a Big Red Safety Teacher Toolkit. Educational materials, toolkits, and webinars are also available on the website.

SPECTRUM

770-239-6630

<https://atl-spectrum.com/>

Supports the Autism community through programs, events, and resources. Programs include support groups and social groups for various populations, free respite through church partnerships, Saturday day camps, Spring Break & Thanksgiving Break day camps, overnight summer camps, and clubs around various topics. Events include Mom's Day Out and sensory-friendly movies. Community resources and funding resources are on the website.

Gigi's Playhouse

470-359-4105

11235 Alpharetta Hwy, Ste 120, Roswell

<https://gigisplayhouse.org/atlanta/>

Nonprofit dedicated to providing free therapeutic programming, resources, and support to families of individuals with Down syndrome. Offers one-on-one tutoring, speech and language program, play groups, pet therapy groups, skills groups, and moms groups.

Children and Adults with ADHD (CHADD)

770-972-4418

www.chadd.org

Website offers information, resources, toolkits, and trainings about ADHD for parents, educators, and professionals.

Lilburn CHADD affiliate offers a support group for parents of ADHD children and a group for teens/young adults with ADHD. Meetings are the third Tuesday of each month at 7:00 pm at Trinity Lutheran Church (1826 Killian Hill Rd, Lilburn).



Supportive Services for Adults with Disabilities

Bobby Dodd Institute

(Formerly All About Developmental Disabilities)
678-365-0071

2120 Marietta Blvd, Atlanta

<http://bobbydodd.org>

Offers continuum of support for all ages and levels of need for people with disabilities and their families. Programs for job training & supported employment, family support, benefits navigation, and access to the Georgia Community Trust. Apply for services online.

View Point Health:

Intellectual & Developmental Disabilities Services

678-209-2555

specialitysvcs@vphealth.org

<https://www.myviewpointhealth.org/about/idd/>

Offers supports to adults with disabilities: residential services to live independently in the community, skills training, supported employment, and family support. Call or email to access services.

Social Security Administration – Supplemental Security Income

1-800-772-1213

<https://www.ssa.gov/ssi/>

Program pays benefits to disabled adults and children who have limited income and resources. The application process can be started online or by phone, and applicants can also schedule an appointment with someone to walk them through the process. Determination letters are mailed about 3-6 months after application.

InCommunity

Atlanta: 404-634-4222

<https://incommunityga.org>

Supports those with intellectual and developmental disabilities, along with their families. Programs provide community living support, residential options, adult day programs, supported employment, family support funding, respite care, crisis support, and behavior support. Request services online.

Georgia Vocational Rehabilitation Agency

844-367-4872

2211 Beaver Run Rd, Ste 160, Norcross

<https://gvs.georgia.gov/>

Services designed to help people with disabilities find and maintain employment. Services include career counseling and guidance, job coaching and placement, training and education after high school, job site accommodations, assisted technology assessment and devices, medical and psychological assessments, time-limited medical and psychological treatment, transportation, adapted driver training, modifications to homes/vehicles/worksites.

Friends of Disabled Adults and Children (FODAC)

770-491-9014

4900 Lewis Road, Tucker, GA

<https://www.fodac.org>

Supplies and repairs medical equipment, provides home and vehicle modifications, offers computers and assistive technology. There is a \$25 registration fee for first-time clients.

Creative Enterprises

770-962-3908

701 Hi Hope Lane, Lawrenceville

<http://www.creativeenterprises.org>

Offers creative programs and services for people with disabilities. Work opportunities are available through the Production Facility and Greenhouse. The Art Program, Classrooms Without Walls, and Licensed Cat Shelter offer therapeutic and skill-building experiences. Enrollment information is online.

Annandale Village

770-945-8381

3500 Annandale Lane, Suwanee, GA 30024

<http://annandale.org>

Non-profit residential community that serves adults with disabilities and acquired brain injuries. On-campus living is offered through independent apartments, semi-independent apartments, and assisted living homes, and skilled nursing homes.

The All In Community Living Program supports those living independently with transportation, training, and healthcare coordination. Day Programs, Life Enrichment Programs, and Respite are also offered.

“Just” People

770-441-1188

<http://www.justpeople.org>

*Not currently taking any new members, but there is a waiting list.

Non-profit that provides support services to adults with developmental disabilities, mental illnesses, and brain injuries. Programs: Community Living Program, Independent Living Program, Supported Employment Program, Day Program, Social Program, Sports Program

United Cerebral Palsy of Georgia

770-676-2000

3300 NE Expressway, Building 9, Atlanta

<https://ucpga.org>

Offers community living, in home support, day programs, and supportive services for adults with Cerebral Palsy.





HOUSING

Rent/Utility Assistance

Gwinnett County Cooperative Ministries:

City	Duluth 770-623-9563	Lawrenceville 770-339-7887	Lilburn 770-931-8333	Norcross 770-263-8268	North Gwinnett 770-271-9793	Southeast Gwinnett 770-985-5229
Types of Assistance	Rent, Utilities, Food, Prescriptions	Rent, Utilities, Food, Clothing, Prescriptions	Rent, Utilities, Food, Prescriptions	Rent, Utilities, Food, Prescriptions	Utilities, Food, Prescriptions	Utilities, Food, Prescriptions
Eligible Zip Codes	30096,30097	30019, 30043, 30044, 30045, 30046	30047, 30084, 30087	30071, 30360, 30084, 30092, 30093	30024, 30518, 30519	30078, 30039, 30017, 30052

HOPE Atlanta 404-817-7070

<http://www.hopeatlanta.org>

Provides rapid re-housing for people experiencing homelessness and assists people who are stranded with returning to their home community and support system. Provides supportive housing for those experiencing homelessness, including a program specifically for those living with HIV/AIDS. Provides outreach support, including case management. Assists with rent and utilities for those facing eviction.

St. Vincent de Paul 678-892-6163

<https://svdpgeorgia.org/>

Offers emergency rent/mortgage and utility assistance, as well as a food pantry and clothing closet. Offers temporary housing in a hotel or assistance with moving and storing items when eviction can't be avoided. Motel 2 Home program helps families move from extended stay hotels to permanent housing by providing up to \$2500 towards move-in costs. Transitional housing programs are available for women with children under 12 or with no children. Call the main number to be connected to your local chapter, apply for Motel 2 Home online, or call 770-367-0168 for transitional housing programs.

Partnership for Community Action 404-929-2500

5151 Brookhollow Pkwy Ste 135, Norcross
<https://pcaction.org/>

Families who have low income and have experienced a hardship that prevents them from paying bills may receive emergency funds for rent/mortgage/other immediate needs. Information about eligibility and required documents online. Assistance with heating/cooling bills and water bills through LIHEAP & LIHWAP may be requested online.

Georgia Department of Community Affairs (DCA) <https://www.dca.ga.gov/safe-affordable-housing>

DCA funds programs for Rapid Re-housing, Emergency Shelter, and Homeless Prevention (financial assistance and case management to prevent eviction). In Gwinnett County, these programs can be accessed through VPH by filling out this form:

<https://forms.gle/VF5Q98TqmjCnKGC9A>.

Salvation Army
770-724-1677

3455 Sugarloaf Parkway, Lawrenceville
<https://southernusa.salvationarmy.org/gwinnett/>

Offers emergency rent/mortgage and utility assistance, as well as a food and toiletry pantry. Home Sweet Home offers motel vouchers and assistance with finding permanent housing.

Africa's Children's Fund
678-381-1282

<https://africaschildrensfund.org>

Offers emergency rent and utility assistance for those facing eviction or disconnection.

Overcomer's House
678-615-7714

2114 Fountain Square, Snellville
<https://myovercomershhouse.com>

Emergency rent and utility assistance, as well as rapid re-housing program, available to those affected by COVID-19. Also have food pantry and community thrift store.

Lawrenceville Response Center

<https://www.lawrencevilleutilities.com/229/Payment-Assistance>

Families living in the City of Lawrenceville who have Lawrenceville Utilities can apply for financial assistance. Fill out the form online to schedule a phone appointment.

Giving Kitchen

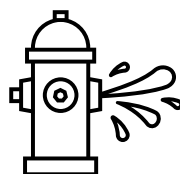
<https://thegivingkitchen.org/help>

Provides financial assistance toward rent/utilities for food service workers (restaurant, catering, concessions, food trucks, cafeterias, bars) who have experienced a crisis (illness, injury, death of immediate family member, housing disaster). Complete application form online.

LIVE Norcross
470-361-1070

<https://gwinnetthousing.org/livenorcrosshousingassistance/>

Program through Gwinnett Housing Corporation that provides rental assistance when funding is available. (Not available as of March 2023.) As of March 2023, has funding available for emergency shelter through hotel/motel vouchers for those impacted by COVID-19. Submit application on website.



General Housing Assistance

Catholic Charities

770-790-3112

<https://catholiccharitiesatlanta.org/>

Bilingual staff help families stabilize their housing situation through their housing counseling program. Call to schedule an appointment.

Gwinnett Housing Corporation

470-361-1070

<https://gwinnetthousing.org>

GHC is a non-profit division of the Lawrenceville Housing Authority. *Pathway Home* program offers two year transitional housing program for families with children. Families must be referred through Salvation Army, Family Promise, Safe Place, and St. Vincent de Paul. *Welcome Home* program is a home ownership program providing down payment assistance – new homes are expected to be available in March 2023 and can be found on the website. *CHIP* program is for homeowners needing repairs done who cannot afford them. *LIVE Norcross* provides rental assistance when funding is available, and as of March 2023, has funding for emergency shelter through motel/hotel vouchers.

Second Chance Management Companies

These management companies work with families with low credit scores or a history of eviction.

Ventron Management:

<https://www.ventronmanagement.com/georgia>

BH Management:

<https://livebh.com/apartments-in/atlanta-ga/>

Progress Residential:

<https://rentprogress.com/houses-for-rent/state-ga/page-1/rows-20/search-results/>

Georgia Affordable Housing Search

<https://www.georgiahousingsearch.org/>

Search for affordable rental properties in your area.

Housing Authority Offices

Lawrenceville: 770-963-4900

<https://lawrencevilleha.org>

Buford: 770-945-5212

<https://www.habuford.com/>

Norcross: 770-448-3668

<https://www.norcrossga.net/113/Norcross-Housing-Authority-NHA>

Local housing authorities provide safe and affordable housing to those with low income.

Families might qualify for housing based on income, lack of criminal history, and absence of outstanding debt to another housing authority – eligibility details can be found on websites.

Waitlists are typically closed and will open for short windows of time – check websites for updates.

Georgia Department of Community Affairs (DCA)

<https://www.dca.ga.gov/safe-affordable-housing>

The Housing Choice Voucher Program (formerly known as Section 8) provides rental assistance for low-income families. As of March 2023, waitlists are closed, and updated information can be found at the website.

Homeless Shelters & Supports

HomeFirst Gwinnett 770-847-6765

<https://homefirstgwinnett.org/>

HomeFirst Gwinnett is the Coordinated Entry Access Point for Gwinnett county. Provides emergency shelter for women and families with children at The Resting Spot. Families can apply for emergency shelter on the website. Housing navigators may be able to link families with resources. Also provides a location for mail and laundry for those who are homeless.

Safe Place Gwinnett

Housed at Positive Impact International
404-516-7995

Crisis Help Line: 404-513-9138

950 Scales Road Suite 401, Suwanee

Tami@ThePositiveImpact.org

<https://thepositiveimpact.org/safe-place>

Provides emergency shelter for young people under the age of 18 in crisis situations. Young people can reach out via the crisis help line or in person at a Safe Place location (QT gas stations, libraries, YMCA, fire stations).

LIVE Norcross 470-361-1070

[https://gwinnetthousing.org/
livenorcrosshousingassistance](https://gwinnetthousing.org/livenorcrosshousingassistance)

Program through Gwinnett Housing Corporation that provides rental assistance when funding is available. (Not available as of March 2023.) As of March 2023, has funding available for emergency shelter through hotel/motel vouchers for those impacted by COVID-19. Submit application online.

Crossroads 404-873-7659

mojemuyiwa@gmail.com

Motel to Home program provides move-in assistance to cover deposits and other fees (not application fees) for those who have lived in a motel for 30 days, have children under 18, and work full time making a minimum of \$2500 per month. Housing must already be secured/approved to receive funds.

Georgia Department of Community Affairs (DCA) <https://www.dca.ga.gov/safe-affordable-housing>

DCA funds programs for Rapid Re-housing, Emergency Shelter, and Homeless Prevention (financial assistance and case management to prevent eviction). In Gwinnett County, these programs can be accessed through VPH by filling out this form:

<https://forms.gle/VF5Q98TqmjCnKGC9A>.

HOPE Atlanta

404-817-7070

458 Ponce de Leon Ave NE,

Building B, Terrace Level, Atlanta

<http://www.hopeatlanta.org>

Provides rapid re-housing for people experiencing homelessness and assists people who are stranded with returning to their home community and support system. Provides supportive housing for those experiencing homelessness, including a program for those living with HIV/AIDS. Provides outreach support & case management. Assists with rent and utilities for those facing eviction.

Home of Hope

678-546-8770

3850 Tuggle Road, Buford

<https://homeofhopegcs.org>

Offers 3-12 month transitional living program for children ages 0-17 and their moms, or young women ages 18 and up experiencing homelessness. Employment is required within the first 30 days, and weekly life skills classes are required.

Family Promise of Gwinnett County

678-376-8950

3495B Sugarloaf Pkwy, Lawrenceville

<https://familypromisegwinnett.org/>

Provides shelter to children and their families experiencing homelessness, along with case management, for 30-90 days. Assessment form can be completed online.

Covenant House

404-549-0163

Youth Direct Line: 404-713-0954

1559 Johnson Road NW, Atlanta

<http://www.covenanthousega.org>

Provides emergency shelter and wraparound support for 30-90 days for young people ages 18-24. Youth who have become stable and obtained employment while in shelter can apply for Rights of Passage program, which provides independent living with support in an apartment setting.

Another Chance of Atlanta

678-974-5989

<https://anotherchanceofatlanta.org/>

Offers permanent supportive housing for single disabled veterans who are chronically homeless – fill out request form online. Offers hotel vouchers and rapid rehousing program and can be accessed through Home First Gwinnett.

Nicholas House

404-622-0793

830 Boulevard SE, Atlanta

www.nicholashouse.org

Provides housing for homeless families consisting of at minimum one parent or guardian and one child. To qualify, families must be located in the City of Atlanta, DeKalb County, or Fulton County. Homeless families in these areas are encouraged to contact Coordinated Entry Access Points based on location, which can be found on the website.

Rainbow Village, Inc.

770-497-1888

3427 Duluth Hwy 120, Duluth

<http://rainbowvillage.org>

Aspire program provides stable housing for 30 families for up to 2 years, and the Thrive program provides additional support after Aspire. Children at Rainbow Village are able to receive afterschool support through the Academy program. Admission is only open when there is an apartment available, and Rainbow Village is generally at full occupancy due to the length of support.

Positive Impact Health Center

404-977-5111

3350 Breckinridge Blvd, Suite 200, Duluth

<https://www.positiveimpacthealthcenters.org/housing/>

Housing assistance for those living with HIV/AIDS. Offers emergency shelter, deposits, and rental assistance.

Atlanta Mission

404-588-4000

www.atlantamission.org

My Sister's House provides overnight shelter for women and children (must be over 18 unless accompanied by a mother or legal guardian) at 921 Howell Mill Road, Atlanta. Admissions for women and children takes place at Restoration House.

Restoration House provides overnight shelter for women and children (must be over 18 unless accompanied by a mother or legal guardian), focusing on those who have experienced trauma. Client intake sessions are in person Monday-Friday from 8:30-11:30 at 655 Ethel St NW, Atlanta. The Shepherd's Inn provides shelter for men over age 18. Client intake sessions are in person Monday-Friday from 8:30-11:30 at 165 Ivan Allen Jr Blvd, Atlanta, and it is recommended to arrive at 7:30.

Project Community Connections, Inc

404-215-9991

302 Decatur St SE, Atlanta

<https://pccihome.org>

Supports homeless people in becoming permanently housed. Those needing housing are encouraged to contact Coordinated Entry Access Points based on their location. As of March 2023, PCCI is not accepting referrals from Gwinnett County, unless you are a veteran.

Caring Works

404-371-1230

2785 Lawrenceville Hwy, Ste 205, Decatur

<http://caringworksinc.org>

MOVE program provides supportive housing for women and children, and female heads of household must have a documented disability. RISE program provides supportive housing for men and women over 18. Connect with CaringWorks through your Coordinated Entry Access Point based on your location (Home First Gwinnett in Gwinnett County).

Gwinnett County Warming Stations

770-822-8850

<https://www.gwinnettcounty.com/web/gwinnett/departments/communityservices/healthhumanservices/warmingstations>

Warming stations are open overnight from 6:00 pm to 7:00 am when temperatures reach below 35 degrees. Locations are in Buford, Duluth, Norcross, Snellville, and Lawrenceville, and addresses can be found on the website.



Domestic Violence Shelters & Supports

Partnership Against Domestic Violence

404-873-1766: 24-hour crisis line

<http://padv.org/>

Provides housing and support services for survivors of domestic violence in Gwinnett and Fulton counties. Offers emergency shelter up to 90 days, supportive housing for homeless survivors of domestic violence, individual counseling in English and Spanish, support groups in English and Spanish, legal advocacy, safety planning, and financial assistance. Fill out the online form for the DV Coordinated Entry team to request housing.

The Georgia Coalition Against Domestic Violence

404-209-0280: office

1-800-33-HAVEN/1-800-334-2836: 24-hour crisis

<https://gcadv.org/>

Georgia agency that supports survivors and the agencies that serve them, educates the public, and advocates for public policy. Online informational resources. Offers several projects and initiatives including BRIDGES Deaf Advocacy Program, which provides accessible services to deaf survivors of domestic violence in the metro area.

Sisters Empowerment Network

770-909-0376

<https://sistersempowerment.org>

Non-profit in Riverdale that supports survivors of domestic violence with resources, referrals, and services. Offers virtual self-help groups; assistance with filing a TPO; assistance with finding emergency shelter; referrals for food, clothing, and furniture. Email info@sistersempowerment.org to request an appointment.

The National Domestic Violence Hotline

1-800-799-7233: 24-hour crisis line

Text START to 88788

<http://www.thehotline.org/> chat online

Offers support in English, Spanish, and 200 other languages.

Women's Resource Center to End Domestic Violence

404-370-7670: office

404-688-9436: 24-hour crisis line

<https://www.wrcdv.org/>

Dekalb county agency that offers a safe house for survivors of domestic violence; community-based advocacy for individuals, families, and children; legal advocacy; and support groups. Hosts Camp PEACE (<https://camppeaceatl.org>), a summer camp for children who have been exposed to domestic violence. Hosts Nia's Place (<https://niasvisitation.org>), which provides supervised visitation and exchange of children for families affected by domestic violence.

International Women's House

770-413-5557 24-hour crisis line

<https://internationalwomenshouse.com>

Agency in Dekalb county that provides emergency shelter and community services for survivors of domestic violence and sexual assault. Services include legal advocacy, counseling, children's program, financial skills training, parenting skills training, employment skills training, medication management assistance, SNAP and Medicaid applications, immigration paperwork assistance.

Legal Aid Atlanta

678-376-4545 Gwinnett Co.

<https://atlantalegalaid.org>

Offers free legal aid for low-income people across the metro Atlanta area. Supports survivors of domestic violence around legal action and child custody.

Love is Respect

866-331-9474: 24-hour crisis line

Text LOVEIS to 22522

<https://loveisrespect.org> chat online

Domestic violence hotline for teens. Website offers info about dating, healthy relationships, personal safety, and supporting others.

Caminar Latino

855-226-4627 info line

<https://caminarlatino.org>

Provides comprehensive domestic violence interventions for Latino families. Offers crisis intervention, safety planning, support groups, court accompaniment, and TPO assistance for survivors of domestic violence, along with access to shelters, legal services, and counseling. Offers support and learning groups, counseling, and tutoring for children, adolescents, and young adults affected by domestic violence. Offers 24-week Family Violence Intervention Program for perpetrators of domestic violence.

Tahirih Justice Center

470-481-4700

<https://www.tahirih.org/>

National nonprofit that serves immigrant survivors of gender-based violence. Provides policy advocacy, outreach and training, and direct services. Direct services include legal services, social services, and forced marriage protection.

MACOSH Healing Network

404-916-3796

<https://macosh.org>

Provides culturally specific resources and services through the arts to crime victims and survivors of domestic violence in African American communities.

Ahimsa House

404-452-6248: 24-hour crisis line

404-496-4038: Admin line

<http://ahimsahouse.org/>

Provides foster care for pets of those seeking safety from domestic violence. Anyone in Georgia can call the crisis line to ask for assistance.

Tapestri

404-299-2185

3939 Lavista Rd. Suite E, Tucker

<https://tapestri.org>

Serves immigrant and refugee women, children, and men who are survivors of domestic violence, sexual abuse, human trafficking, and unaccompanied minors. Offers casework, crisis counseling, legal advocacy, and referrals to culturally sensitive pro-bono attorneys. Offers 24 week Family Violence Intervention Program for perpetrators of domestic violence for free to refugee men who have been in the US for less than 5 years and on a sliding scale for other men.

Raksha

404-876-0670

<https://raksha.org>

Raksha supports South Asian survivors of domestic violence and sexual assault, along with their children. Raksha staff speak the following languages: Bengali, Urdu, Hindi, Tamil, Telugu, Kannada, Tulu, and Konkani. Provides counseling, support groups, economic empowerment, and advocacy services.

Shalom Bayit

770-677-9322

<https://jfcsatl.org>

Shalom Bayit (Peace in the Home) is a program of Jewish Family and Career Services that works to dispel the myth that abuse does not occur in Jewish homes. Provides counseling, support groups, safety planning, and referrals for those impacted by domestic violence and abuse.

Gwinnett County Courts

<https://www.gwinnettcourts.com/about/domestic-violence>

Provides information about obtaining a Temporary Protective Order (TPO) in Gwinnett County.

Clothing Resources

Quinn House Thrift Store

770-962-0470

219 Scenic Hwy S, Lawrenceville

<https://thequinnhouse.com>

Thrift store that supplies clothing, furniture, and appliances to those in need for no charge. Hours are Monday-Friday 10:00-6:00 and Saturday 10:00-4:00. Call to schedule an appointment.

Streetwise

678-985-9915

1770 Cedars Road, Lawrenceville

<https://streetwisegeorgia.org>

Call Monday, Tuesday, or Thursday between 10:15-2:00 to make an appointment for assistance, including clothing, or register for an appointment on the website. Required: Photo ID; Social security cards for adults in the home; names, birthdates, and ages of everyone living in the home; current utility bill showing proof of address.

Overcomer's House

678-615-7714

2114 Fountain Square, Snellville

<https://www.myovercomershous.com/>

Community Thrift Store open on Mondays, Wednesdays, Fridays, Saturdays from 10:00-3:00

Buford Family Community Center

678-292-5954

4042 Friendship Road, Buford

<https://www.bufordfamilysda.org/>

Food and clothing available on Tuesdays from 11:00-3:00. Please bring a photo ID and a picture of your family.

St. Vincent de Paul

678-892-6163

<https://svdpgeorgia.org>

There are thrift store locations in Buford, Lawrenceville, Duluth, Lilburn, and Stone Mountain. Those in need can receive vouchers to shop for clothing, shoes, housewares, and furniture at no cost. Call to be connected to your local chapter.

Salvation Army Gwinnett

770-724-1661

3455 Sugarloaf Pkwy, Lawrenceville

<https://southernusa.salvationarmy.org/gwinnett/>

Call to make an appointment to receive clothing assistance. Hours are Monday – Friday 9:00-12:00 and 1:00-4:00.

City of Hope Community Resource Center @ Hopewell Missionary Baptist Church

404-398-5448

182 Hunter Street NW, Norcross

<https://www.hmbchurch.net/coh-resource-center/>

Food pantry and clothing closet can be accessed every 30 days with a photo ID. Open Tuesdays, Wednesdays, Thursdays from 10:30-1:30

Eyes of Love Lighthouse Mission

404-786-1131

332 South Hill Street, Buford

Clothing and furniture available to those in need. Open Monday, Tuesday, Wednesday, Thursday 9:00-4:00





FOOD

Please call food pantries before visiting to confirm that they are still in operation and that hours have not changed. The following resources have been categorized based on geographic region for your convenience. School personnel and/or parents are welcome to choose a resource from various geographic regions, with the exception of county co-ops, which only serve residents of specific zip codes.

North Gwinnett Food Resources (Auburn, Braselton, Buford, Hoschton, Sugar Hill, Suwanee)

North Gwinnett Cooperative

770-271-9793

4395 Commerce Drive, Buford

<https://northgwinnettcoop.org>

Mon 6-8pm; Wed-Fri 10am-2pm

Food is provided once a month to families with children under 18. No appointment required. Must have photo ID and current paper utility bill or lease.

Serves Gwinnett residents in zip codes 30515, 30519, 30518, 30024, 30011, 30517, 30548.

Buford Family Community Center

678-292-5954

4042 Friendship Road, Buford

Food and clothing available on Tuesdays from 11:00am– 3:00pm

Bring photo ID and picture of your family.

Casa Vida

770-925-5105

2020 L'ville Suwanee Rd Ste 104, Suwanee

Sun 11:30am-12:30pm

Spanish-speaking church with food pantry

Duluth Food Resources (Berkeley Lake, Duluth)

Duluth Cooperative Ministry: Hands of Christ

770-623-9563

3395 Fox Street, Duluth

<https://duluthco-op.org>

Mon, Wed, Fri 10:00am-2:00pm

Must sign up for pickup day and time on the website. Bring an ID and recent bill with address.

Serves Gwinnett zip codes 30096 and 30097.

CarePointe Food Pantry at Cross Pointe Church

678-812-4500

1800 Satellite Boulevard, Duluth

<http://crosspointechurch.com/carepointe>

Weds & Sat 9:30am-12:30pm

Bring a photo ID and proof of address.

Humanity First Food Pantry

3100 Breckinridge Blvd Suite 740, Duluth

Sundays from 12:30pm-5:00pm

Contact Atlanta.Pantry@US.HumanityFirst.org for appointments

Friendship Baptist Church

3375 Church Lane, Duluth

<https://fbcduluth.org/ministries/outreach-ministry/>

Fridays from 3:00-5:00pm

Meat, produce, dairy, and more are distributed curbside – first come, first served.

Lawrenceville Food Resources (Dacula, Lawrenceville)

Lawrenceville Cooperative Ministry 770-339-7887

52 Gwinnett Dr Suite C, Lawrenceville
<https://lawrencevilleco-op.org>

Mon 5-7pm; Wed & Fri 9am-12pm

May receive food every 4 weeks. Must have photo ID for each adult and ID for each child (school ID, birth certificate, passport, report card, prescription bottle), and utility bill within the last 30 days. Serves Gwinnett residents in zip codes 30043, 30044, 30045, 30046, 30049, 30019.

Pantry at Hamilton Mill United Methodist Church 770-271-8855

1450 Pine Road, Dacula

<https://hmumc.org/thepantry>

Drive thru food pantry on Saturdays from 8:00am-10:30am. May receive food every other week. Bring a picture ID for yourself and any other family you pick up for.

Satisfied at North Metro Baptist Church 470-202-8114

1026 Old Peachtree Road NE, Lawrenceville
Food pantry on Saturdays from 9:00-11:00

Streetwise

678-985-9915

1770 Cedars Road, Lawrenceville

<https://streetwisegeorgia.org>

Call Mon, Tues, or Thurs from 10:15am-2:00pm to schedule an appointment or book an appointment on the website. May receive food every 6 weeks. Must have photo ID, social security cards for adults over 18 in the home, names, birthdates, and ages of everyone living in the home, and a current utility bill showing address. Streetwise also hosts a mobile food pantry on the second Saturday of each month, and registration opens the Monday two weeks before the mobile pantry. May register on the website.

The Quinn House 770-962-0470

555 Hurricane Shoals Rd NW, Lawrenceville
<https://thequinnhouse.com>

Call to request an appointment to pick up a food box on Tuesdays-Thursdays from 9:00am-12:00pm. Proof of address is required. Must be a Gwinnett county resident. May receive food once every 60 days.

Salvation Army of Gwinnett County 770-724-1677

3455 Sugarloaf Pkwy, Lawrenceville

<https://southernusa.salvationarmy.org/gwinnett/>

Mon, Tues, Thurs 2:00pm-4:00pm

May receive food once per month. Must have ID and utility bill; Gwinnett county residents are eligible.

Love Outreach Mission at Global Outreach Church 770-934-1347

1294 Braselton Hwy, Lawrenceville

<https://www.go-church.org/lom>

Food pantry on Saturdays from 10:00-1:00.

Lilburn Food Resources (Lilburn, Stone Mountain, Tucker)

Lilburn Cooperative Ministry

770-931-8333

5329 Five Forks Trickum Road, Lilburn

<https://lilburncoop.org>

Mon, Weds, Fri from 10:00am-2:00pm. Proof of residence is required. Serves Gwinnett residents in zip codes 30087, 30084, 30047.

Mercy Seed Resource Center

At New Mercies Christian Church

770-925-8600

4000 Five Forks Trickum Road, Lilburn

Saturdays 9:30-11:00

ID is required.

Community Food Center

678-553-5994

1979 Parker Court, Stone Mountain

Mon Tues Thurs 9:00am-11:45pm: client choice

Mon Tues Thurs 2:30pm-5:15pm carside

Walk-ins are welcome but appointments are encouraged. Call to make an appointment.

Norcross Food Resources (Doraville, Norcross, Peachtree Corners)

Norcross Cooperative Ministry

770-263-0013

500 Pinnacle Court Suite 510, Norcross

<https://ourncm.org>

Mon Wed Fri 10:00am-2:00pm,

Tues 6:00pm-8:00pm

Sat 10:00am-12:00pm

Doors open 30 minutes before shift hours. Photo IDs are required for all adults in the home, and IDs (ex. Birth certificate, Medicaid card, social security card) are required for all children in the home. Proof of residence (current rental agreement, utility bill) is required.

Serves Gwinnett residents in zip codes 30340, 30360, 30071, 30091, 30093, 30092, 30084.

City of Hope Community Resource Center

Hopewell Missionary Baptist Church

404-398-5448

182 Hunter St., Norcross

Tues-Thurs 10:30am-1:30pm

Families can receive food every 30 days. Photo ID required.

**Southeast Gwinnett Food Resources
(Grayson, Loganville, Snellville)**

Overcomers House

678-615-7714

2114 Fountain Square, Snellville

<https://www.myovercomershouse.com/>

Mon & Sat 12:00pm-2:00pm drive through

Weds 12:00pm-2:00 pm make your own food box
ID required. One box per household.

Southeast Cooperative Ministry

770-985-5229

55 Grayson Industrial Pkwy, Grayson

<https://segwinnettcoop.org/>

Mon 4:00pm-7:00pm drive up

Weds & Fri 9:00am-12:00 pm inside

Photo ID and current piece of mail required.

Families can receive food every 2 weeks.

Serves Gwinnett residents in zip codes 30017,
30039, 30078, 30052.

Impact Community Food Pantry

At Impact Church

770-979-7079

3594 Centerville Hwy, Snellville

<https://impactgwinnett.com/pantry>

Thurs & Sat 9:30am-11:30am

Purposeful Food Pantry

At Purpose World Church

762-333-2630

1905 Highpoint Road, Snellville

[https://www.purposeworldchurch.com/purposeful-
food-pantry/](https://www.purposeworldchurch.com/purposeful-food-pantry/)

Weds 2:30-6:30

Application on website. Proof of Gwinnett
residency required (ex. Driver's license, utility bill),
proof of US citizenship required (ex. birth
certificate, passport, green card), proof of income
required (ex. Pay stub, SSI benefit letter,
unemployment documentation, retirement
documentation)

Hugs & Hope Food Pantry

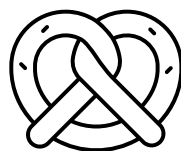
Park Place Church

770-776-6461

4576 Lenora Church Rd, Snellville

Tues 2:00pm-4:00pm

No paperwork required.



General Food Resources

Gwinnett County Public Library

<https://www.gwinnettpl.org/news/drive-through-food-distribution/>

GCPL frequently hosts drive thru food and meal pantries at these branches: Dacula, Lilburn, Buford, Five Forks, Snellville, Lawrenceville, and Norcross. Check the website for upcoming dates and times.

Food Finder

770-527-2181

<https://foodfinder.us>

Online or app service to locate nearby food resources.

AARF Pet Food Pantry

678-534-3483

951 Main Street, Stone Mountain

<https://aarfatlanta.org>

Pet owners with low income can fill out an application to receive food for their pet on the website. Serves residents in zip codes 30021, 30052, 30083, 30084, 30087, 30088.

Live Healthy Gwinnett

<https://www.livehealthygwinnett.com/programs-events/>

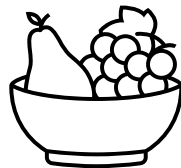
Live Healthy Gwinnett often hosts drive thru food pantries at local parks. Check the website for upcoming dates and times.

St. Vincent de Paul Society of Georgia

678-892-6163

<https://svdpgeorgia.org>

Clients select their own food at SVDP service hubs. Call the phone number to be linked to the food pantry closest to you.





CHILDCARE/AFTERSCHOOL RESOURCES

Boys & Girls Club

Worley Brown: 678-421-0894
5360 Old Norcross Rd, Norcross
Metro Atlanta: 770-995-0100
382 Stone Mountain St, Lawrenceville
<https://bgcma.org/>

B&GC offers afterschool care and summer camps. Membership is free for high school students and is waived for students who have Amerigroup insurance. Membership for students experiencing homelessness is free at the Worley Brown location. Fees are based on income, and scholarships are available. Worley

Brown B&GC picks up from these schools: Baldwin ES, Chesney ES, Meadowcreek ES, Beaver Ridge ES, Peachtree ES, Pinckneyville MS, Duluth MS, Radloff MS, Duluth HS, Meadowcreek HS, GIVE West. These schools drop off at Worley Brown B&GC: Norcross ES, Summerour MS, Norcross HS. Metro Atlanta B&GC picks up from these schools: GIVE East, Cedar Hill ES, Starling ES, Couch MS, Richards MS, Discovery HS. These schools drop off at Metro Atlanta B&GC: Winn Holt ES, Lawrenceville ES, Simonton ES, Jenkins ES, Moore MS, Jordan MS, Central Gwinnett HS.

Quality Rated Childcare

1-877-255-4254

<https://qualityrated.org>

Locate childcare providers, including after school care. Find information about Early Head Start, Head Start, and pre-kindergarten.

YMCA

Fowler: 770-246-9622
5600 W Jones Bridge Rd, Peachtree Corners
Tull: 770-963-1313
2985 Sugarloaf Pkwy, Lawrenceville
<https://ymcaatlanta.org/>

YMCA offers Afterschool programs, School Break Camps, and Summer Camps. Financial assistance is available – to apply, contact your local branch. Fowler YMCA offers school-based programs at the following schools: Graves ES, Nesbit ES, and Stripling ES. Fowler YMCA bus picks up from the following schools: Peachtree ES, Simpson ES, Berkeley Lake ES. Tull YMCA offers school-based programs at the following schools: Benefield ES, Lovin ES, Mulberry ES, Cooper ES. Tull YMCA bus picks up from the following schools: Cedar Hill ES, Craig ES, Jenkins ES, Lawrenceville ES, Pharr ES, Simonton ES, Starling ES, Winn Holt ES.

Next Generation Focus

678-516-5062

2500 Beaver Ruin Rd, Norcross

<https://nextgenerationfocus.org>

Next Generation Focus's Smarter Me Academy offers an afterschool program and summer camp for Pre-K-8th graders. They also offer an online tutoring/afterschool and Saturday program for K-12th graders. Scholarships are available.

Childcare & Parents Services (CAPS)

1-833-442-2277

<https://caps.decal.ga.gov/>

Subsidizes the cost of childcare. New families applying for CAPS must be in a priority group: families referred by Child Protective Services, children in DFCS custody, families experiencing domestic violence, families of children with disabilities, families of children enrolled in Georgia pre-k, families participating in or transitioning from TANF, families who have experienced a natural disaster, families who lack fixed, adequate, and regular housing, families with no or very low income (equal to or less than 50% of the State Median Income), families referred by Grandparents Raising Grandchildren, minor parents 20 years old and younger, and student parents.

Apply for CAPS at <http://www.gateway.ga.gov/>

Bennett's Place Interactive Learning Center

678-878-4103

800 Lawrenceville Hwy, Lawrenceville, GA 30046

<https://www.bennettsplacega.com>

Skill building, after school care, respite care, and summer camp for students with special needs.





EMPLOYMENT

Georgia Department of Labor: Gwinnett County Career Center

770-840-2258

2211 Beaver Ruin Rd, Ste 160, Norcross

<https://dol.ga.gov>

Job search assistance, including job listings and job fair events. Information and resources for veteran job seekers and job seekers with disabilities. Information and resources for youth who are seeking jobs. File for unemployment insurance on the website.

Goodwill of North Georgia

770-564-2447

1502 Pleasant Hill Road, Duluth

<https://goodwillng.org/gw-locations/pleasant-hill-store-donation-center-30096/>

Access local job listings, career prep workshops and classes, and job fairs. Utilize computers, resume and cover letter writing assistance, and career coaches.

WorkSource Atlanta Regional

404-463-3327

3885 Crestwood Pkwy Ste 200, Duluth

5150 Sugarloaf Pkwy Bldg 100, Lawrenceville

<https://atlantaregional.org/workforce-economy/services-for-job-seekers/job-training-education/>

Applicants must be unemployed, have been laid off, or meet a low-income threshold. Offers career assessment testing, job readiness training, and job search training. Apply on the website.

Latin American Association

678-205-1018

308 N. Clayton Street, Lawrenceville

<https://thelaa.org>

Offers employment services such as recruiting sessions with employers, career fairs, resume workshops, and a job bank. Offers adult education classes as well.

Better Work Gwinnett

770-242-0001

333 Research Ct, Ste 210, Peachtree Corners

<https://betteropportunity.org/better-work-gwinnett/>

Connects job seekers, community organizations, and local employers. Search for job opportunities in Gwinnett, view local job fairs, find trainings around job skills and specific trades, and be connected with an employment mentor.

Opportunity Atlanta

<https://www.opportunityatl.org/jobseekers/resources>

Job seekers can create a profile in Opportunity Match to be connected with employers, gain access to free training programs, and find resources related to resume building and interview skills.

Atlanta Center for Self-Sufficiency

[404-874-8001](tel:404-874-8001)

18 William Holmes Borders Senior Dr, Atlanta

<https://atlantacss.org/>

The CareerWorks program offers employment readiness and job placement/retention services to those who are homeless or have low income. CareerWorks Veterans Services offers the same services and additional resources available to veterans. ACSS also offers financial coaching and income support services. Fill out the online form to register.



LEGAL

Atlanta Legal Aid Society

<https://www.georgialegalaid.org/>

Website provides information about legal topics (examples are housing, immigration, civil rights, victim's rights, wills and life planning). ALAS provides legal representation for low-income residents of Gwinnett county in civil cases. The application can be filled out online.

Gwinnett County Courts

<https://www.gwinnettcourts.com/about/domestic-violence>

Provides information about obtaining a Temporary Protective Order (TPO) in Gwinnett County.

Lambda Legal Help Desk

<https://lambdalegal.org/helpdesk/>

Provides general legal information and resources related to discrimination based on sexual orientation, gender identity and expression, and HIV status. Does not provide direct legal services/consultation

Disability Rights Legal Center

<https://thedrlc.org/>

Provides legal services for people who have experienced discrimination based on disabilities. Requests for assistance can be made on their website.

ACLU Georgia

<https://www.acluga.org/en/seeking-legal-help-aclu-georgia>

Provides legal services to those whose civil liberties have been violated. ACLU Georgia is only able to help with a small percentage of requests made, and requests can be made on their website.

Crime Victims Advocacy Council

770-333-9254

<https://cvaonline.org/>

Offers crisis intervention, support groups, and assistance in filing victim's compensation.

NAACP's Legal Defense Fund (LDF)

<https://www.naacpldf.org/>

LDF is a legal organization fighting for racial justice who provides legal assistance for civil rights violations. LDF is only able to help with a small percentage of requests made, and a request for assistance can be made on their website.



Immigration Legal Services

Catholic Charities Atlanta

770-429-2369

2305 Parklake Dr, Ste 150, Bldg 9, Atlanta

<https://catholiccharitiesatlanta.org>

Offers immigration legal services and legal representation for immigrants who have been survivors of violence.

Asian Americans Advancing Justice

404-890-5655

5680 Oakbrook Pkwy, Ste 148, Norcross

<http://advancingjustice-atlanta.org>

Multilingual team offers legal services and support for low-income immigrants. Offers citizenship clinics and know your rights workshops.

Georgia Asylum and Immigration Network (GAIN)

678-335-6040

<https://georgiaasylum.org>

Provides legal services to asylum seekers looking for refuge in the US, and legal services to immigrant survivors of domestic violence, human trafficking, sexual assault, and other crimes.

Immigrant Legal Resource Center

www.ilrc.org

National nonprofit resource center that provides immigration legal trainings, technical assistance, and educational materials. Does not provide direct legal services/consultation.

Kuck Baxter Immigration Partners

404-816-8611

<https://www.immigration.net/>

Law firm specializing in employment-based and family-based immigration legal services.

Latin American Association

678-205-1018

308 North Clayton St, Lawrenceville

<https://thelaa.org/>

Offers Latino families affordable legal immigration services.

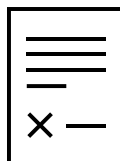
CPACS (Center for Pan Asian Community Services)

770-232-5200

4405 International Blvd, Ste C101, Norcross

<https://cpacs.org/>

Provides legal services for immigration issues such as employment and marriage-based petitions, visa extension, change of status, and naturalization.





MULTI-CULTURAL RESOURCES

Resources for Asian Families

CPACS (Center for Pan Asian Community Services)

770-232-5200

4405 International Blvd, Ste C101, Norcross

<https://cpacs.org/>

Multilingual provider offering multiple services for the Asian American community, including community education, housing counseling and education, legal immigration services, social services for refugees, services for senior adults, assistance navigating public benefits and social services, and translation/interpretation. CPACS COSMO Health Center offers affordable medical care, dental care, and behavioral health care for those with and without insurance.

Centro Internacional de Maternidad (CIMA)

678-672-4645

5161 Brook Hollow Pkwy Ste 200, Norcross

<https://cimasalud.net/>

Family planning, including birth control, pregnancy tests, prenatal care, delivery care, postnatal care, STD treatment, annual exams. Accepts most insurances and Medicaid. Providers speak English, Spanish, and Portuguese and have a Vietmanese translator.

Asian Americans Advancing Justice

404-890-5655

5680 Oakbrook Pkwy, Ste 148, Norcross

<http://advancingjustice-atlanta.org>

Multilingual team offers legal services and support for low-income immigrants. Offers citizenship clinics and know your rights workshops.

Raksha

404-876-0670

<https://www.raksha.org/>

Multilingual provider offers support to the South Asian community. Provides counseling to child and adults survivors of crime, domestic violence, sexual assault, and trafficking and a support group for children. Provides assistance around accessing employment and benefits/services.

Resources for Latino Families

Please refer to the Behavioral Health section for Spanish-speaking mental health providers.

Latin American Association

678-205-1018

308 North Clayton St, Lawrenceville

<https://thelaa.org/>

Bilingual staff offers comprehensive supports for Latino families, including food provision, homelessness prevention, benefits enrollment, immigration legal services, employment assistance, adult education, and translation. Offers mentors for youth and a free summer program for Gwinnett County students.

Centro Internacional de Maternidad (CIMA)

678-672-4645

5161 Brook Hollow Pkwy Ste 200, Norcross

<https://cimasalud.net/>

Family planning, including birth control, pregnancy tests, prenatal care, delivery care, postnatal care, STD treatment, annual exams. Accepts most insurances and Medicaid. Providers speak English, Spanish, and Portuguese and have a Vietmanese translator.

Clinica de la Mama

770-613-0670

5050 Jimmy Carter Blvd, Norcross

Spanish speaking OB/GYN provider who is able to offer payment plans for those who are uninsured.

Ser Familia

678-363-3079

5000 Peachtree Industrial Blvd Ste 160, Norcross
3594 Baxley Point Drive, Suwanee

<https://serfamilia.org/>

Empowers Latino families through educational programs, workshops, and retreats. Works with the whole family, offering couples workshops, parenting education, counseling, domestic violence services, youth empowerment workshops, and tutoring.

Centro Prenatal De Georgia

Lawrenceville: 770-227-0230

575 W. Pike Street, Lawrenceville

Norcross: 470-514-5818

5195 Jimmy Carter Blvd, Norcross

<https://www.centroprenataldega.com/>

Offers family planning, prenatal and postnatal care, annual exams, STD treatment. Offer affordable services for those without insurance. Spanish and English-speaking providers.

Caminar Latino

855-226-4627 info line

<https://caminarlatino.org>

Provides comprehensive domestic violence interventions for Latino families. Offers crisis intervention, safety planning, support groups, court accompaniment, and TPO assistance for survivors of domestic violence, along with access to shelters, legal services, and counseling. Offers support and learning groups, counseling, and tutoring for children, adolescents, and young adults affected by domestic violence. Offers 24-week Family Violence Intervention Program for perpetrators of domestic violence.

Immigrant & Refugee Resources

New American Pathways

404-299-6099

2300 Henderson Mill Rd, Ste 100, Atlanta

<https://newamericanpathways.org/>

Supports refugees by providing resettlement and resource navigation, educational support for youth and adults, and immigration support.

Catholic Charities Atlanta

770-429-2369

2305 Parklake Dr, Ste 150, Bldg 9, Atlanta

<https://catholiccharitiesatlanta.org>

Offers immigration legal services and legal representation for immigrants who have been victims of violence. Provides refugee resettlement services and youth mentoring program.

Good Shepherd Services

770-455-9379

2426 Shallowford Terrace, Atlanta

<https://www.goodshepherdatl.org/>

Provides outreach services to refugees and immigrants in need with a focus on those of Burmese, Cambodian, Thai, Chinese, Laotian, and Vietmanese origin.

DFCS Refugee Program

Coordinator Michael Singleton

404-290-6638

<https://dfcs.georgia.gov/services/refugee-program>

Administers federal funds for refugees and connects families to resources.

Amani Women Center

770-255-0539

3777 Church St, Clarkston

<https://amaniwomencenter.org/>

Provides services and supports to refugee and immigrant women. Offers community assistance with accessing resources, workforce development and job placement, health and mental health resources, immigration services, and interpretation and translation

CPACS (Center for Pan Asian Community Services)

770-232-5200

4405 International Blvd, Ste C101, Norcross

<https://cpacs.org/>

Provides multiple services for the Asian American community, including legal services for immigrants and comprehensive social services to refugees.

Women Watch Afrika

404-759-6419

gloryk_99@yahoo.com

<https://womenwatchafrika.org/>

Offers culturally relevant social services to African refugees and newly-arrived immigrants. Offers support around housing, financial, legal, employment, and health needs.

International Women's House

770-413-5557 24-hour crisis line

<https://internationalwomenshouse.com>

Provides services for survivors of domestic violence and sexual assault, including legal advocacy, counseling, children's program, financial skills training, parenting skills training, employment skills training, medication management assistance, SNAP and Medicaid applications, immigration paperwork assistance.

Family Heritage Foundation

404-299-7766

751 N Indian Creek, Clarkston

<https://www.fhfi.org/>

Christian ministry focused on serving refugee families in Clarkston. Offers ESL and Citizenship Classes, Homelessness Prevention funds and services, and Food and Diaper Bank.

Resources for LGBTQ Students

PFLAG Lawrenceville

pflaglawrenceville@gmail.com

<https://www.pflaglawrenceville.org/>

PFLAG is an organization for LGBTQ people, their parents and families, and allies that offers monthly support groups, advocacy opportunities, and educational events. Lawrenceville support groups meet the 2nd Thursday of each month at the Aurora Theater in Lawrenceville from 7:00-8:30pm. There are groups for LGBTQ adults, LGBTQ teens and allies (ages 13-17), and Family, Friends, & Allies. PFLAG also has Connects Communities that offers virtual support groups for specific populations: Black/African American, Latino, AAPI, and Military. More information can be found on the website at <https://pflag.org/connects-communities/>.

Georgia Safe Schools Coalition

<https://gasafeschools.org/>

Organization committed to ending LGBTQ oppression in Georgia schools. Offers resource information, as well as information for students about how to start a Gay Straight Alliance club at their school.

National Center for Transgender Equality

<https://transequality.org/>

Website offers information and resources for transgender people.

All 1 FAMILy

404-454-9805

1530 Dekalb Ave NE, Ste A, Atlanta

<https://www.all1familyinc.org/>

Provides mental health services for LGBTQ youth and adults. Offers telehealth. Accepts Aetna, Amerigroup, BCBS, CareSource, Cenpatico, Coventry, Cigna, GEHA, Humana, Magellan, Peach State, Tricare, United Health Care insurances, and offers a sliding scale starting at \$60. Offers individual, family, and couples counseling, parent education group, and teen group.

Georgia Equality

<https://georgiaequality.org/>

Georgia Equality's mission is to advance fairness, safety, and opportunity for LGBTQ communities across the state. Find up-to-date legislative information and resources on their website.





MULTI-RESOURCE AGENCIES

OneStop 4 HELP

770-822-8850

OneStopHelp@GwinnettCounty.com

<https://GwinnettOneStop.com>

OneStop centers located in Buford, Norcross, Centerville, and at the Gwinnett Senior Services Center. Links Gwinnett residents with resources for employment, food, shelter, mental health, substance use, utility assistance, and other issues.

Gwinnett Health Finder

<https://gwinnetthealthfinder.org/>

Online database powered by the Gwinnett Coalition whose mission is to link those who are uninsured or underinsured with quality, affordable healthcare. Families can search for Adult Clinics, Pediatric Clinics, Specialty Care, Dental Care, or Mental Health Care by location.

Gwinnett County Division of Family and Children Services (DFCS)

678-518-5500: Gwinnett

1-877-423-4746

<https://dfcs.georgia.gov/>

95 Constitution Blvd, Lawrenceville

DFCS Child Welfare investigates reports of child abuse and neglect and works with parents to ensure that their children are safe, and they manage foster and adoptive homes. DFCS Office of Family Independence (OFI) issues SNAP (food stamps), TANF (temporary financial assistance) CAPS (childcare assistance program), and Medicaid (health insurance for those with low income).

United Way 2-1-1

<http://211online.unitedwayatlanta.org/>

Call 211 or use the online database to be connected with resources for food, clothing, utility assistance, shelter, employment, education and training, prescriptions, and more.

Find Help Georgia

<https://findhelpga.org/>

Search for resources by zip code and keyword, or browse resources for food, housing and goods, health, disability and aging, early childhood, caregivers, education and training, money and employment, transportation, and safety and legal.

Jewish Family and Career Services

770-677-9300

<https://jfcsatl.org/>

4549 Chamblee Dunwoody Rd, Atlanta

JFCS aims to strengthen and enrich lives of individuals, families, and communities, both Jewish and non-Jewish. Offers services for aging adults, career counseling, dentistry, mental health, intellectual and developmental disabilities services, and mentoring and parent support. Offers emergency assistance & food pantry.



HOTLINES

Georgia Crisis & Access Line (GCAL)

1-800-715-4225

www.mygcal.com

Help is available 24/7 for Georgians experiencing challenges with mental health, drugs, alcohol, or developmental disabilities. GCAL can also be accessed by dialing 988.

988 Suicide & Crisis Lifeline

Call or text 988

<https://988lifeline.org/chat/>

Call or text 988, or use the link to chat via web browser, to be connected to a crisis center.

Mosaic Georgia: Sexual Assault Center & Children's Advocacy Center

1-866-900-6019

www.mosaicgeorgia.org

Crisis intervention and support for victims and secondary victims of sexual assault.

National Domestic Violence Hotline

1-800-799-7233

Text START to 88788

Chat live at <https://www.thehotline.org/>

Crisis Text Line

Text "home" to 741741

<https://crisistextline.org>

Connect with a volunteer crisis counselor via text message, web browser, or What's App. Connection with a counselor usually takes less than 5 minutes but can take longer during high-traffic times.

Love is Respect

1-866-331-9474

<https://loveisrespect.org>

Teens can call, chat live, or text "Lovelis" to 22522 to receive confidential support, resources, and information about dating abuse and healthy relationships.

Safe Place Gwinnett

Housed at Positive Impact International

Crisis Help Line: 404-513-9138

<https://thepositiveimpact.org/safe-place>

Emergency shelter and crisis support for young people in need of immediate help and safety.

Child Abuse and Neglect Reporting

Centralized Intake Line

1-855-422-4453

(1-855-GACHILD)

