

# Attendance Works

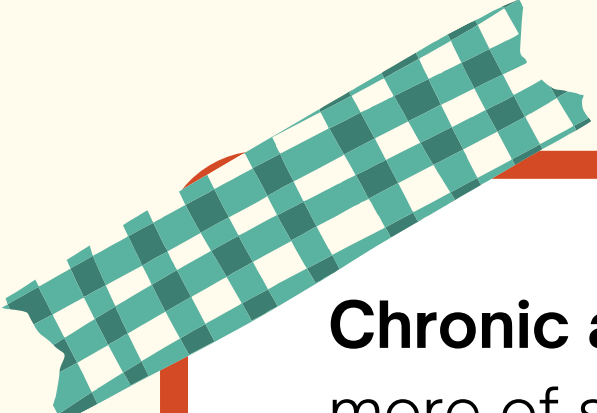
**Parent Liaison**  
Ms. Chavez

20  
23



# TRUANCY vs. CHRONIC ABSENCE

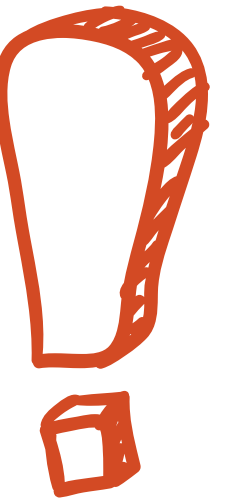
This isn't simply a matter of truancy or skipping school. In fact, many of these absences, especially among our youngest students, are excused.



**Chronic absence** — missing 10 percent or more of school days due to absence for any reason—excused, unexcused absences and suspensions—can translate into students having difficulty learning to read by the third-grade, achieving in middle school, and graduating from high school.

## Absences are tied to:

- Health problems.(Asthma, diabetes, etc.)
- Lack of nearby school bus or safe route to school.
- Food



## Truancy Vs. Chronic Absence

### TRUANCY

- Counts only unexcused absences
- Emphasizes compliance with school rules
- Relies on legal & administrative solutions

Vs.

### CHRONIC ABSENCE

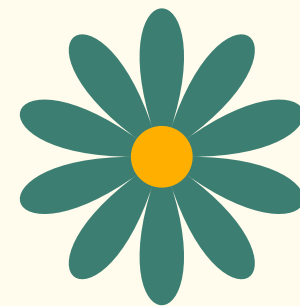
- Counts all absences: excused, unexcused & suspensions
- Emphasizes academic impact of missed days
- Uses community-based, positive strategies



# Attendance Workshops

<https://youtu.be/hiLFESy3EWo>

Video 1



<https://vimeo.com/63614396>

Video 2



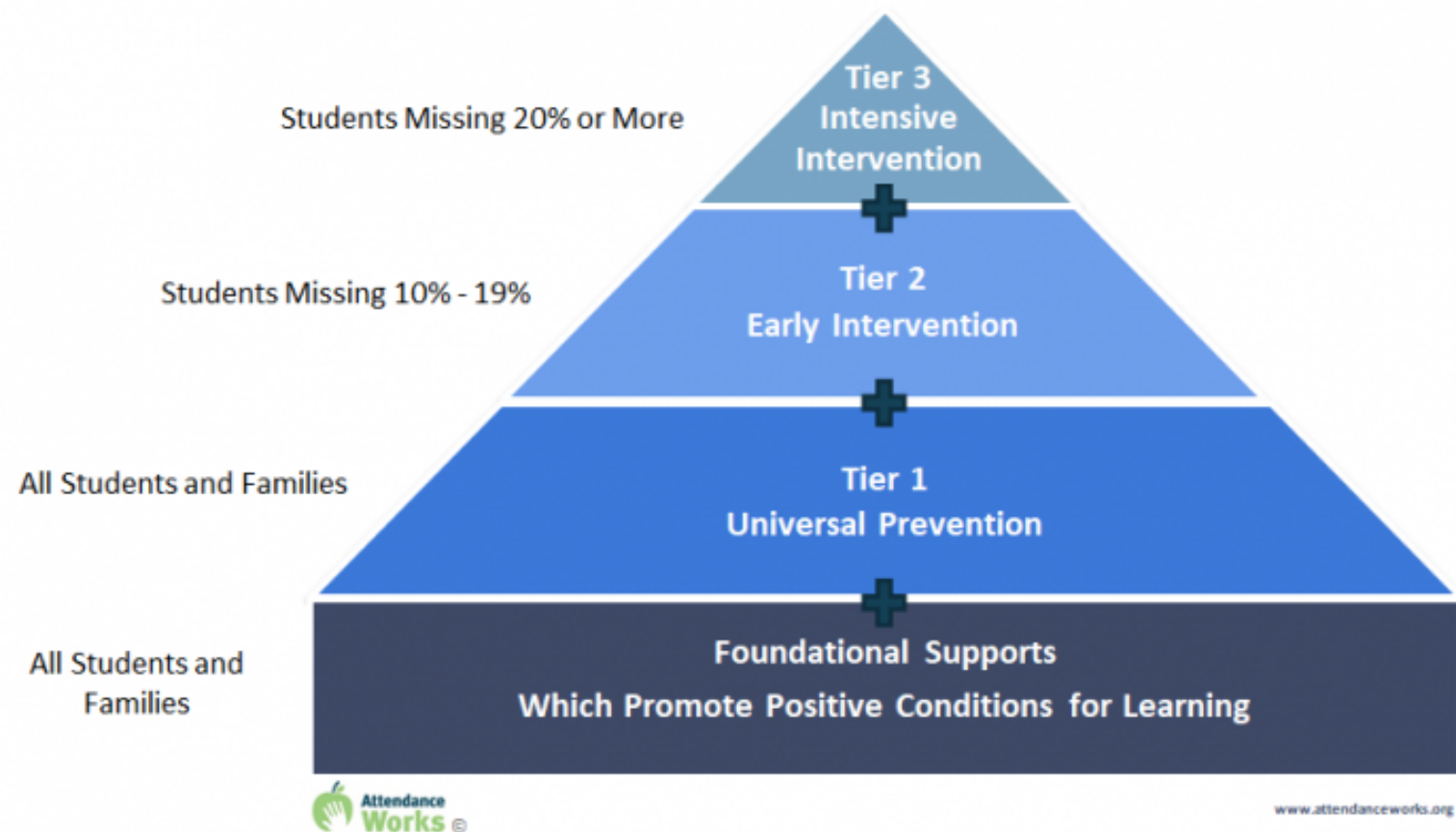
# Intervention

Foundational strategies are practices for the whole school that promote positive conditions for learning. When positive conditions are in place, students are more likely to attend and be engaged.

Tier 1 strategies are aimed at encouraging better attendance for all students and at preventing absenteeism before it affects achievement.

Tier 2 interventions are designed to remove barriers to attendance for students at greater risk of chronic absenteeism, such as those who missed 10% of the school year, the standard definition of chronic absenteeism. These students and families should receive personalized attention as part of the engagement strategy.

Tier 3 interventions provide intensive support to students missing the most school, often involving not just schools but other agencies such as health, housing and social services, and typically requiring case management customized to individual students' challenges. Students missing 20% or more of the school year benefit from the addition of this intensive level of support.



**Thank you.**

Each Day Counts

Attendance Works!

