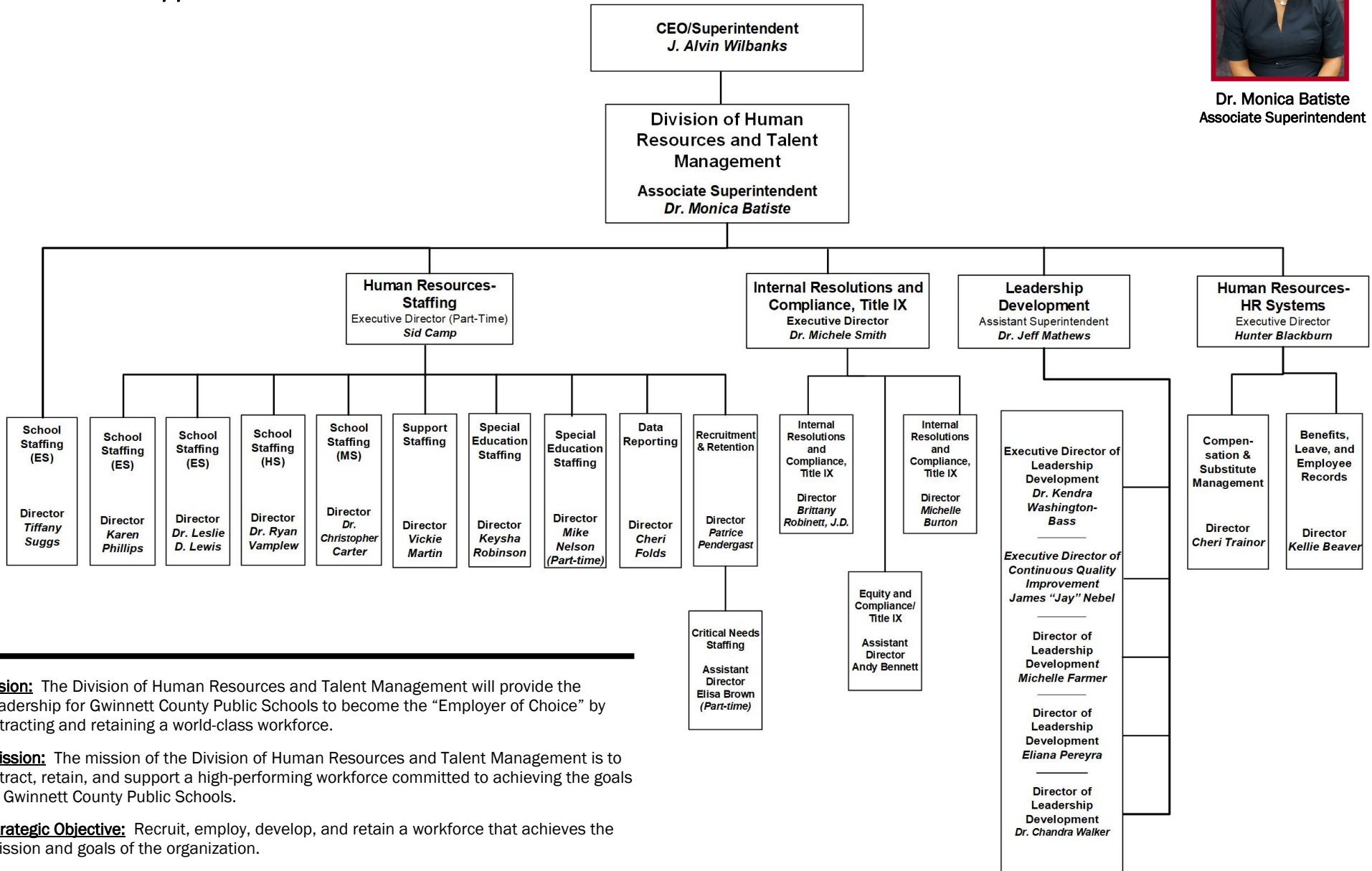


Division of Human Resources and Talent Management
Dr. Monica Batiste, Associate Superintendent
 678-301-6100 / fax: 678-301-6105
 Instructional Support Center



Dr. Monica Batiste
 Associate Superintendent



Vision: The Division of Human Resources and Talent Management will provide the leadership for Gwinnett County Public Schools to become the “Employer of Choice” by attracting and retaining a world-class workforce.

Mission: The mission of the Division of Human Resources and Talent Management is to attract, retain, and support a high-performing workforce committed to achieving the goals of Gwinnett County Public Schools.

Strategic Objective: Recruit, employ, develop, and retain a workforce that achieves the mission and goals of the organization.