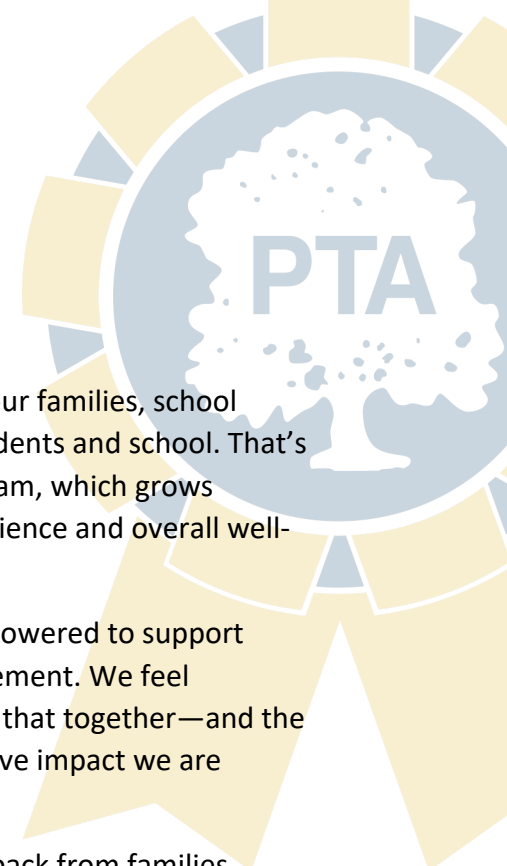




SCHOOL OF  
EXCELLENCE

everychild.onevoice.®



September 6, 2024

Dear Families, Administrators and Teachers:

The Mulberry Elementary PTA knows that a strong partnership among our families, school leaders and community members is important to the success of our students and school. That's why we are participating in the National PTA School of Excellence program, which grows partnerships between PTAs and schools to enrich the educational experience and overall well-being of all students.

At a National PTA School of Excellence, families feel welcomed and empowered to support student success, and PTA is a key partner for continuous school improvement. We feel Mulberry Elementary School and Mulberry Elementary PTA can achieve that together—and the result will be national, state and community-wide visibility for the positive impact we are making together at Mulberry Elementary.

**We need your help!** As part of the process, National PTA requests feedback from families, administrators and teachers at two points in the school year—the beginning and the end. Your feedback will help us improve our family-school partnership and achieve excellence.

Please take 5-10 minutes to reflect on your experience at this school and complete the attached survey. Mark an “X” in the box that most accurately expresses how you feel about your experience. This survey is completely anonymous. Please return this survey to drop box in the front lobby or complete the survey online by **October 6, 2024**.

**Does this sound like a PTA program you'd really like to help with?** Join us! Contact Kiesa Harmon: [mulberryptaexecutiveboard@gmail.com](mailto:mulberryptaexecutiveboard@gmail.com) to learn more!

English



SCAN ME

Spanish



SCAN ME

Sincerely,

Kiesa Harmon

Mulberry Elementary PTA President

**Thank you for your continued support and collaboration as we work toward becoming a National PTA School of Excellence!**